

Anti-Phospho-LAB (Y136) Rabbit Polyclonal Antibody



Catalog #: U2169

Aliases

Linker for activation of T-cells family member 2 (Linker for activation of B-cells) (Membrane-associated adapter molecule) (Non-T-cell activation linker) (Williams-Beuren syndrome chromosomal region 15 protein) (Williams-Beuren syndrome chromosomal region 5 protein)

Background

Gene Name: LAT2/LAB/NTAL/WBS15/WBSCR15/WBSCR5/HSPC046

NCBI Gene Entry: [7462](#)

UniProt Entry: [Q9GZY6](#)

Application Information

Molecular Weight: Predicted, 27 kDa; observed, 30 kDa

Clonality: Rabbit polyclonal antibody

Species Reactivity: Human, mouse, rat

Applications Tested: Western blotting (WB)

Immunogen

A synthesized peptide derived from human Phospho-LAB (Tyr136)

Isotype

Rabbit IgG

Storage Buffer

Supplied in PBS containing 50% glycerol, 0.5% BSA and 0.02% sodium azide.

Storage

Store at -20 °C for one year.

Recommended Dilutions

Western Blotting (WB): 1:500-1:2,000

Note: This product is for research use only.

Validation Data

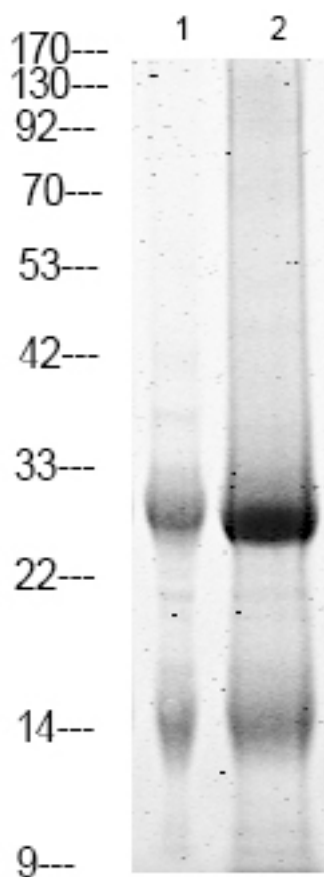
SUPPORT

SUPPORT@GENUINBIOTECH.COM
TEL: +1-540-855-7041

ORDERS

SALES@GENUINBIOTECH.COM
FAX: +1-540-855-7041

WWW.GENUINBIOTECH.COM



Western blotting analysis of 1 HepG2 cell, 2 Serum-free treated ,using primary antibody at 1:1,000 dilution. Secondary antibody was diluted at 1:10,000