

Anti-Phospho-SREBP-2 (S455) Rabbit Polyclonal Antibody



Catalog #: U2177

Aliases

Sterol regulatory element-binding protein 2 (SREBP-2) (Class D basic helix-loop-helix protein 2) (bHLHd2) (Sterol regulatory element-binding transcription factor 2) [Cleaved into: Processed sterol regulatory element-binding protein 2]

Background

Gene Name: SREBF2/BHLHD2/SREBP2

NCBI Gene Entry: [6721](#)

UniProt Entry: [Q12772](#)

Application Information

Molecular Weight: Predicted, 124 kDa; observed, 124 kDa

Clonality: Rabbit polyclonal antibody

Species Reactivity: Human, mouse, rat

Applications Tested: Western blotting (WB)

Immunogen

A synthesized peptide derived from human Phospho-SREBP-2 (Ser455)

Isotype

Rabbit IgG

Storage Buffer

Supplied in PBS containing 50% glycerol, 0.5% BSA and 0.02% sodium azide.

Storage

Store at -20 °C for one year.

Recommended Dilutions

Western Blotting (WB): 1:500-1:2,000

Note: This product is for research use only.

Validation Data

SUPPORT

SUPPORT@GENUINBIOTECH.COM
TEL: +1-540-855-7041

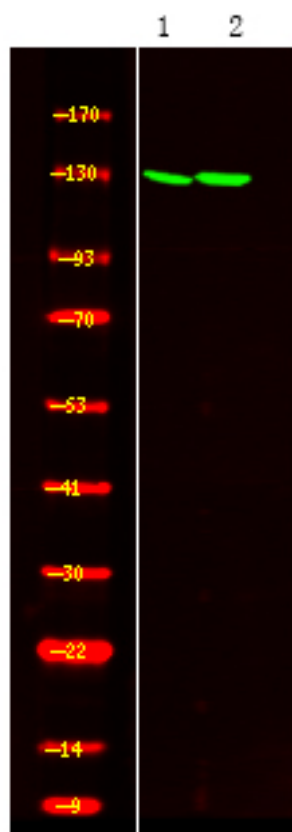
ORDERS

SALES@GENUINBIOTECH.COM
FAX: +1-540-855-7041

WWW.GENUINBIOTECH.COM

Anti-Phospho-SREBP-2 (S455) Rabbit Polyclonal Antibody

PAGE 2



Western blotting analysis of HUVEC cell, HEK-293T cell ,using primary antibody at 1:1,000 dilution. Secondary antibody was diluted at 1:10,000

SUPPORT

SUPPORT@GENUINBIOTECH.COM
TEL: +1-540-855-7041

ORDERS

SALES@GENUINBIOTECH.COM
FAX: +1-540-855-7041

WWW.GENUINBIOTECH.COM