

Anti-Phospho-EIF6 (S235) Rabbit Polyclonal Antibody



Catalog #: U2178

Aliases

Eukaryotic translation initiation factor 6 (eIF-6) (B(2)GCN homolog) (B4 integrin interactor) (CAB) (p27(BBP))

Background

Gene Name: EIF6/EIF3A/ITGB4BP/OK/SW-cl.27

NCBI Gene Entry: [3692](#)

UniProt Entry: [P56537](#)

Application Information

Molecular Weight: Predicted, 27 kDa; observed, 27 kDa

Clonality: Rabbit polyclonal antibody

Species Reactivity: Human, mouse, rat

Applications Tested: Western blotting (WB)

Immunogen

A synthesized peptide derived from human Phospho-EIF6 (Ser235)

Isotype

Rabbit IgG

Storage Buffer

Supplied in PBS containing 50% glycerol, 0.5% BSA and 0.02% sodium azide.

Storage

Store at -20 °C for one year.

Recommended Dilutions

Western Blotting (WB): 1:500-1:2,000

Note: This product is for research use only.

Validation Data

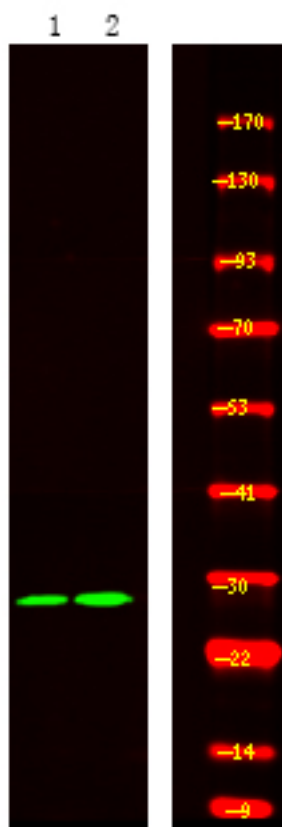
SUPPORT

SUPPORT@GENUINBIOTECH.COM
TEL: +1-540-855-7041

ORDERS

SALES@GENUINBIOTECH.COM
FAX: +1-540-855-7041

WWW.GENUINBIOTECH.COM



Western blotting analysis of 1 HeLa cell, 2 LPS 100ng/mL 30min treated ,using primary antibody at 1:1,000 dilution. Secondary antibody was diluted at 1:10,000