

# Anti-Phospho-Rad2/FEN1 (S187) Rabbit Polyclonal Antibody



**Catalog #: U2183**

## Aliases

Flap endonuclease 1 (FEN-1) (EC 3.1.-.-) (DNase IV) (Flap structure-specific endonuclease 1) (Maturation factor 1) (MF1) (hFEN-1)

## Background

Gene Name: FEN1/RAD2

NCBI Gene Entry: [2237](#)

UniProt Entry: [P39748](#)

## Application Information

Molecular Weight: Predicted, 43 kDa; observed, 42 kDa

Clonality: Rabbit polyclonal antibody

Species Reactivity: Human, mouse, rat

Applications Tested: Western blotting (WB)

## Immunogen

A synthesized peptide derived from human Phospho-Rad2/FEN1 (Ser187)

## Isotype

Rabbit IgG

## Storage Buffer

Supplied in PBS containing 50% glycerol, 0.5% BSA and 0.02% sodium azide.

## Storage

Store at -20 °C for one year.

## Recommended Dilutions

Western Blotting (WB): 1:500-1:2,000

**Note:** This product is for research use only.

## Validation Data

---

### SUPPORT

SUPPORT@GENUINBIOTECH.COM  
TEL: +1-540-855-7041

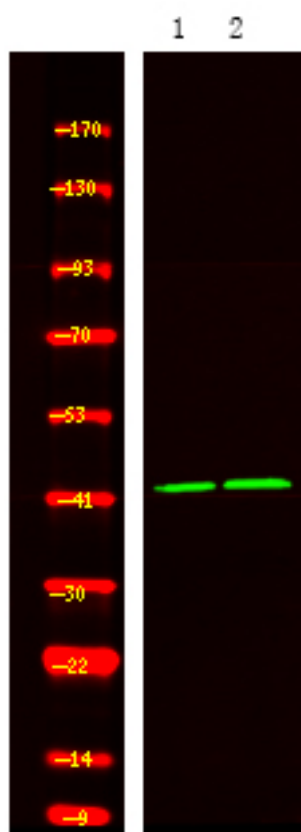
### ORDERS

SALES@GENUINBIOTECH.COM  
FAX: +1-540-855-7041

[WWW.GENUINBIOTECH.COM](http://WWW.GENUINBIOTECH.COM)

## Anti-Phospho-Rad2/FEN1 (S187) Rabbit Polyclonal Antibody

PAGE 2



Western blotting analysis of 1HeLa cell, 2 LPS 100ng/mL 30min treated, using primary antibody at 1:1,000 dilution. Secondary antibody was diluted at 1:10,000

### SUPPORT

SUPPORT@GENUINBIOTECH.COM  
TEL: +1-540-855-7041

### ORDERS

SALES@GENUINBIOTECH.COM  
FAX: +1-540-855-7041

[WWW.GENUINBIOTECH.COM](http://WWW.GENUINBIOTECH.COM)