

# Anti-Phospho-TOPBP1 (S1159) Rabbit Polyclonal Antibody



**Catalog #: U2191**

## Aliases

DNA topoisomerase 2-binding protein 1 (DNA topoisomerase II-beta-binding protein 1) (TopBP1)  
(DNA topoisomerase II-binding protein 1)

## Background

Gene Name: TOPBP1/KIAA0259

NCBI Gene Entry: [11073](#)

UniProt Entry: [Q92547](#)

## Application Information

Molecular Weight: Predicted, 171 kDa; observed, 171 kDa

Clonality: Rabbit polyclonal antibody

Species Reactivity: Human, mouse, rat

Applications Tested: Western blotting (WB)

## Immunogen

A synthesized peptide derived from human Phospho-TOPBP1 (Ser1159)

## Isotype

Rabbit IgG

## Storage Buffer

Supplied in PBS containing 50% glycerol, 0.5% BSA and 0.02% sodium azide.

## Storage

Store at -20 °C for one year.

## Recommended Dilutions

Western Blotting (WB): 1:500-1:2,000

**Note:** This product is for research use only.

## Validation Data

---

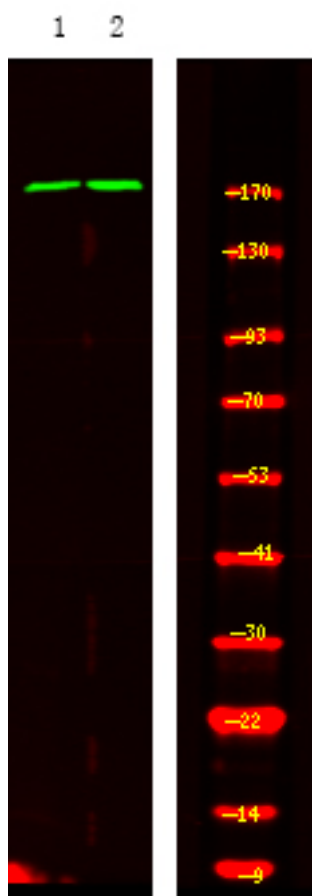
### SUPPORT

SUPPORT@GENUINBIOTECH.COM  
TEL: +1-540-855-7041

### ORDERS

SALES@GENUINBIOTECH.COM  
FAX: +1-540-855-7041

[WWW.GENUINBIOTECH.COM](http://WWW.GENUINBIOTECH.COM)



Western blotting analysis of 1HeLa cell 2 LPS 100ng/mL 30min treated, using primary antibody at 1:1,000 dilution. Secondary antibody was diluted at 1:10,000