

Anti-Phospho-TRF2 (T188) Rabbit Polyclonal Antibody



Catalog #: U2201

Aliases

Telomeric repeat-binding factor 2 (TTAGGG repeat-binding factor 2) (Telomeric DNA-binding protein)

Background

Gene Name: TERF2/TRBF2/TRF2

NCBI Gene Entry: [7014](#)

UniProt Entry: [Q15554](#)

Application Information

Molecular Weight: Predicted, 60 kDa; observed, 60 kDa

Clonality: Rabbit polyclonal antibody

Species Reactivity: Human, mouse, rat

Applications Tested: Western blotting (WB)

Immunogen

A synthesized peptide derived from human Phospho-TRF2 (Thr188)

Isotype

Rabbit IgG

Storage Buffer

Supplied in PBS containing 50% glycerol, 0.5% BSA and 0.02% sodium azide.

Storage

Store at -20 °C for one year.

Recommended Dilutions

Western Blotting (WB): 1:500-1:2,000

Note: This product is for research use only.

Validation Data

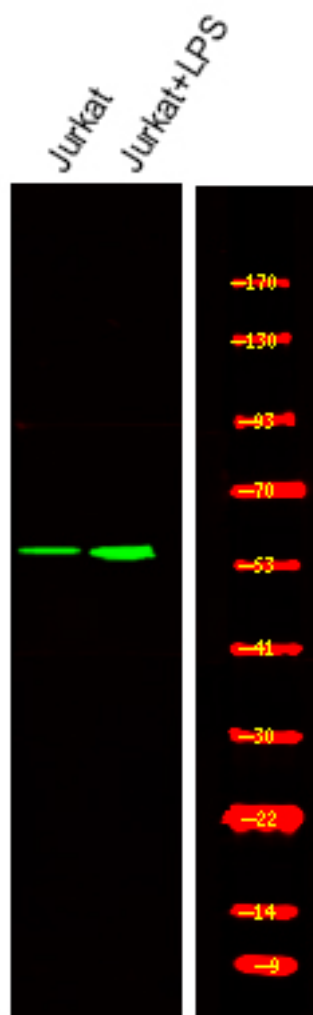
SUPPORT

SUPPORT@GENUINBIOTECH.COM
TEL: +1-540-855-7041

ORDERS

SALES@GENUINBIOTECH.COM
FAX: +1-540-855-7041

WWW.GENUINBIOTECH.COM



Western blotting analysis of various, using primary antibody at 1:1,000 dilution. Secondary antibody was diluted at 1:10,000