

Anti-Phospho-PDX1 (S66) Rabbit Polyclonal Antibody



Catalog #: U2207

Aliases

Pancreas/duodenum homeobox protein 1 (PDX-1) (Glucose-sensitive factor) (GSF) (Insulin promoter factor 1) (IPF-1) (Insulin upstream factor 1) (IUF-1) (Islet/duodenum homeobox-1) (IDX-1) (Somatostatin-transactivating factor 1) (STF-1)

Background

Gene Name: PDX1/IPF1

NCBI Gene Entry: [3651](#)

UniProt Entry: [P52945](#)

Application Information

Molecular Weight: Predicted, 31 kDa; observed, 31 kDa

Clonality: Rabbit polyclonal antibody

Species Reactivity: Human, mouse, rat

Applications Tested: Western blotting (WB)

Immunogen

A synthesized peptide derived from human Phospho-PDX1 (Ser66)

Isotype

Rabbit IgG

Storage Buffer

Supplied in PBS containing 50% glycerol, 0.5% BSA and 0.02% sodium azide.

Storage

Store at -20 °C for one year.

Recommended Dilutions

Western Blotting (WB): 1:500-1:2,000

Note: This product is for research use only.

Validation Data

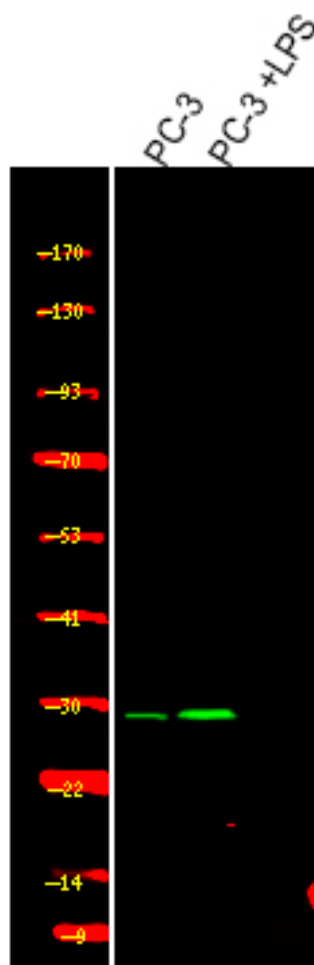
SUPPORT

SUPPORT@GENUINBIOTECH.COM
TEL: +1-540-855-7041

ORDERS

SALES@GENUINBIOTECH.COM
FAX: +1-540-855-7041

WWW.GENUINBIOTECH.COM



Western blotting analysis of various,using primary antibody at 1:1,000 dilution. Secondary antibody was diluted at 1:10,000