

Anti-Phospho-Ataxin-3 (S256) Rabbit Polyclonal Antibody



Catalog #: U2216

Aliases

Ataxin-3 (EC 3.4.19.12) (Machado-Joseph disease protein 1) (Spinocerebellar ataxia type 3 protein)

Background

Gene Name: ATXN3/ATX3/MJD/MJD1/SCA3

NCBI Gene Entry: [4287](#)

UniProt Entry: [P54252](#)

Application Information

Molecular Weight: Predicted, 41 kDa; observed, 41 kDa

Clonality: Rabbit polyclonal antibody

Species Reactivity: Human, mouse, rat

Applications Tested: Western blotting (WB)

Immunogen

A synthesized peptide derived from human Phospho-Ataxin-3 (Ser256)

Isotype

Rabbit IgG

Storage Buffer

Supplied in PBS containing 50% glycerol, 0.5% BSA and 0.02% sodium azide.

Storage

Store at -20 °C for one year.

Recommended Dilutions

Western Blotting (WB): 1:500-1:2,000

Note: This product is for research use only.

Validation Data

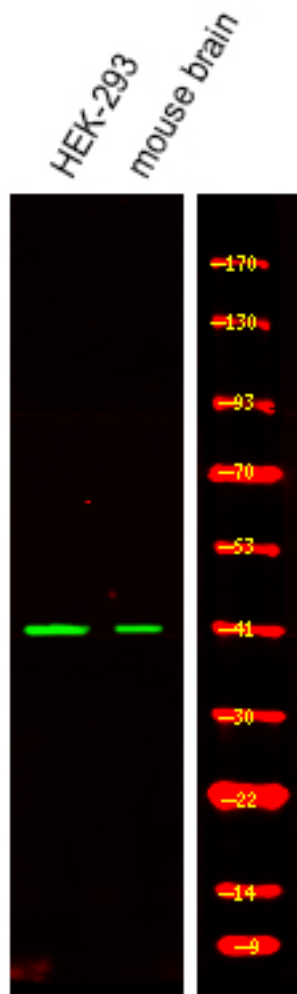
SUPPORT

SUPPORT@GENUINBIOTECH.COM
TEL: +1-540-855-7041

ORDERS

SALES@GENUINBIOTECH.COM
FAX: +1-540-855-7041

WWW.GENUINBIOTECH.COM



Western blotting analysis of various,using primary antibody at 1:1,000 dilution. Secondary antibody was diluted at 1:10,000