

# Anti-Phospho-Shc3 (Y424) Rabbit Polyclonal Antibody



**Catalog #: U2221**

## Aliases

SHC-transforming protein 3 (Neuronal Shc) (N-Shc) (Protein Rai) (SHC-transforming protein C) (Src homology 2 domain-containing-transforming protein C3) (SH2 domain protein C3)

## Background

Gene Name: SHC3/NSHC/SHCC

NCBI Gene Entry: [53358](#)

UniProt Entry: [Q92529](#)

## Application Information

Molecular Weight: Predicted, 64 kDa; observed, 64 kDa

Clonality: Rabbit polyclonal antibody

Species Reactivity: Human, mouse, rat

Applications Tested: Western blotting (WB)

## Immunogen

A synthesized peptide derived from human Phospho-Shc3 (Tyr424)

## Isotype

Rabbit IgG

## Storage Buffer

Supplied in PBS containing 50% glycerol, 0.5% BSA and 0.02% sodium azide.

## Storage

Store at -20 °C for one year.

## Recommended Dilutions

Western Blotting (WB): 1:500-1:2,000

**Note:** This product is for research use only.

## Validation Data

---

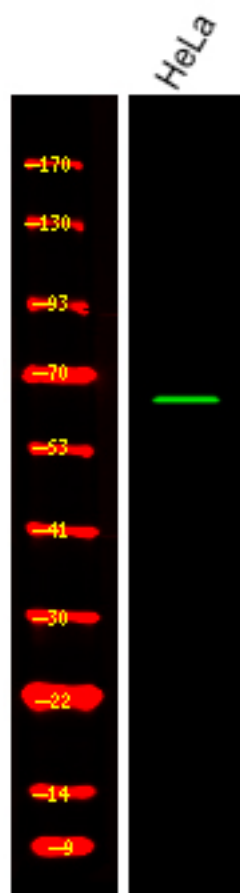
### SUPPORT

SUPPORT@GENUINBIOTECH.COM  
TEL: +1-540-855-7041

### ORDERS

SALES@GENUINBIOTECH.COM  
FAX: +1-540-855-7041

[WWW.GENUINBIOTECH.COM](http://WWW.GENUINBIOTECH.COM)



Western blotting analysis of various,using primary antibody at 1:1,000 dilution. Secondary antibody was diluted at 1:10,000