

Anti-Phospho-MKP-7 (S446) Rabbit Polyclonal Antibody



Catalog #: U2235

Aliases

Dual specificity protein phosphatase 16 (EC 3.1.3.16) (EC 3.1.3.48) (Mitogen-activated protein kinase phosphatase 7) (MAP kinase phosphatase 7) (MKP-7)

Background

Gene Name: DUSP16/KIAA1700/MKP7

NCBI Gene Entry: [80824](#)

UniProt Entry: [Q9BY84](#)

Application Information

Molecular Weight: Predicted, 73 kDa; observed, 73 kDa

Clonality: Rabbit polyclonal antibody

Species Reactivity: Human, mouse, rat

Applications Tested: Western blotting (WB)

Immunogen

A synthesized peptide derived from human Phospho-MKP-7 (Ser446)

Isotype

Rabbit IgG

Storage Buffer

Supplied in PBS containing 50% glycerol, 0.5% BSA and 0.02% sodium azide.

Storage

Store at -20 °C for one year.

Recommended Dilutions

Western Blotting (WB): 1:500-1:2,000

Note: This product is for research use only.

Validation Data

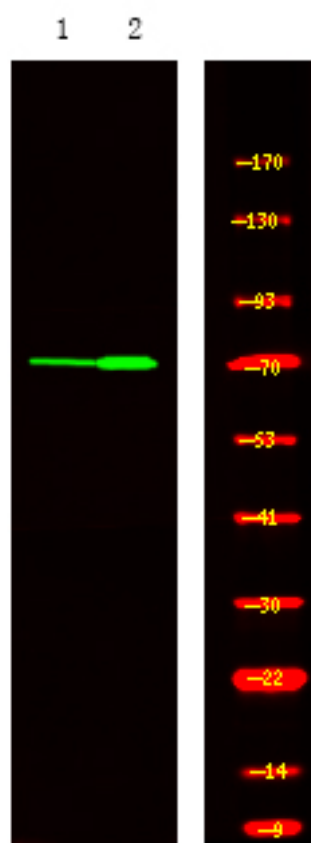
SUPPORT

SUPPORT@GENUINBIOTECH.COM
TEL: +1-540-855-7041

ORDERS

SALES@GENUINBIOTECH.COM
FAX: +1-540-855-7041

WWW.GENUINBIOTECH.COM



Western blotting analysis of 1 HeLa cell, 2, LPS 100ng/mL 30min treated ,using primary antibody at 1:1,000 dilution. Secondary antibody was diluted at 1:10,000