

Anti-Phospho-PDE4D (S578) Rabbit Polyclonal Antibody



Catalog #: U2237

Aliases

cAMP-specific 3',5'-cyclic phosphodiesterase 4D (EC 3.1.4.17) (DPDE3) (PDE43)

Background

Gene Name: PDE4D/DPDE3

NCBI Gene Entry: [5144](#)

UniProt Entry: [Q08499](#)

Application Information

Molecular Weight: Predicted, 91 kDa; observed, 76 kDa

Clonality: Rabbit polyclonal antibody

Species Reactivity: Human, mouse, rat

Applications Tested: Western blotting (WB)

Immunogen

A synthesized peptide derived from human Phospho-PDE4D (Ser578)

Isotype

Rabbit IgG

Storage Buffer

Supplied in PBS containing 50% glycerol, 0.5% BSA and 0.02% sodium azide.

Storage

Store at -20 °C for one year.

Recommended Dilutions

Western Blotting (WB): 1:500-1:2,000

Note: This product is for research use only.

Validation Data

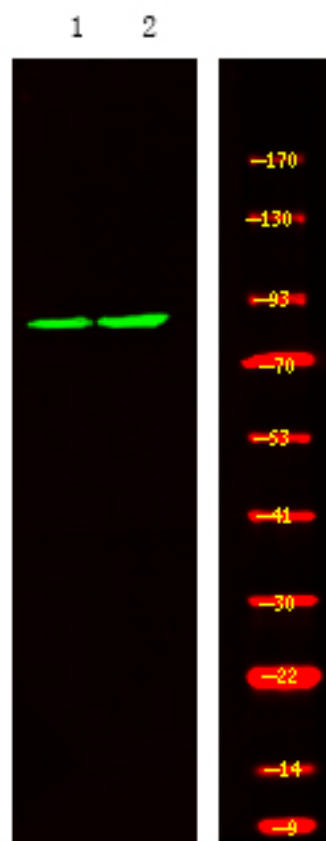
SUPPORT

SUPPORT@GENUINBIOTECH.COM
TEL: +1-540-855-7041

ORDERS

SALES@GENUINBIOTECH.COM
FAX: +1-540-855-7041

WWW.GENUINBIOTECH.COM



Western blotting analysis of K-562 cell, 2, LPS 100ng/mL 30min treated ,using primary antibody at 1:1,000 dilution. Secondary antibody was diluted at 1:10,000