

Anti-Phospho-EPHA6 (Y978) Rabbit Polyclonal Antibody



Catalog #: U2240

Aliases

Ephrin type-A receptor 6 (EC 2.7.10.1) (EPH homology kinase 2) (EHK-2) (EPH-like kinase 12) (EK12)

Background

Gene Name: EPHA6/EHK2/HEK12

NCBI Gene Entry: [285220](#)

UniProt Entry: [Q9UF33](#)

Application Information

Molecular Weight: Predicted, 116 kDa; observed, 116 kDa

Clonality: Rabbit polyclonal antibody

Species Reactivity: Human, mouse, rat

Applications Tested: Western blotting (WB)

Immunogen

A synthesized peptide derived from human Phospho-EPHA6 (Tyr978)

Isotype

Rabbit IgG

Storage Buffer

Supplied in PBS containing 50% glycerol, 0.5% BSA and 0.02% sodium azide.

Storage

Store at -20 °C for one year.

Recommended Dilutions

Western Blotting (WB): 1:500-1:2,000

Note: This product is for research use only.

Validation Data

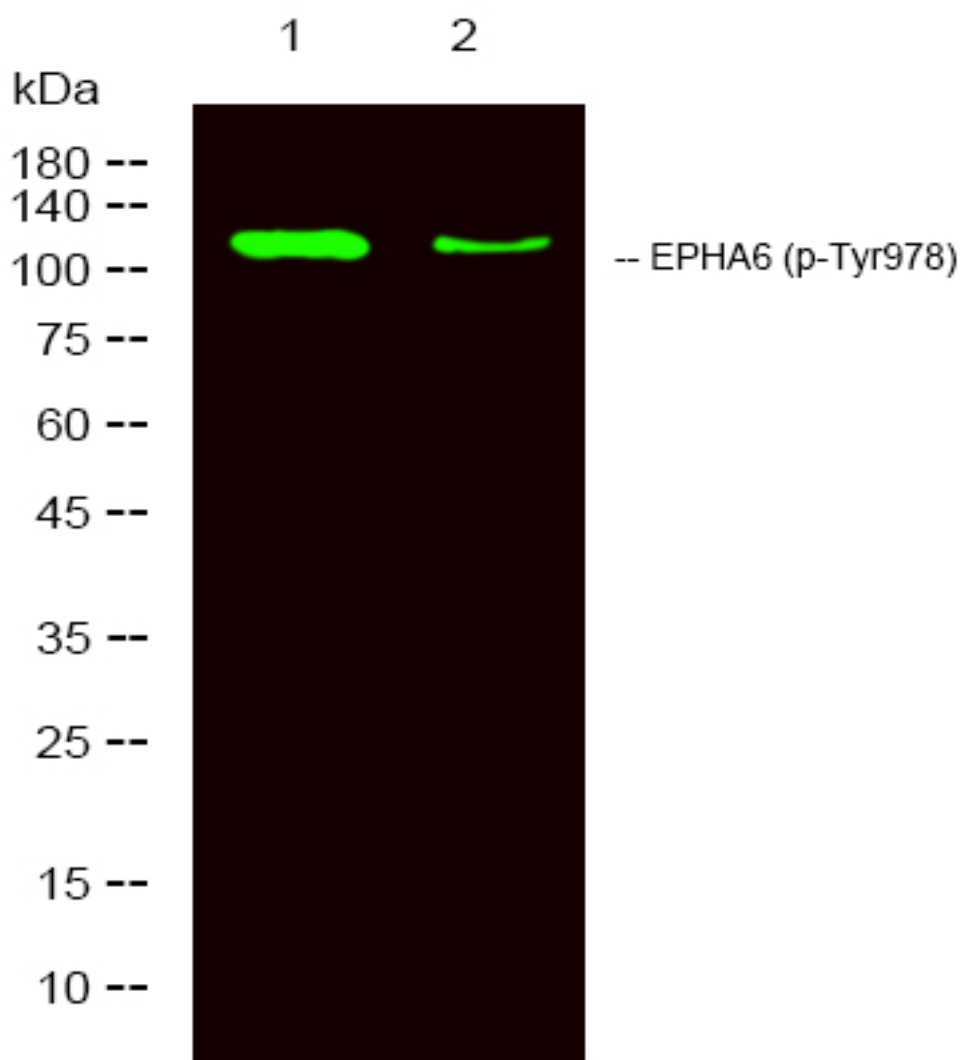
SUPPORT

SUPPORT@GENUINBIOTECH.COM
TEL: +1-540-855-7041

ORDERS

SALES@GENUINBIOTECH.COM
FAX: +1-540-855-7041

WWW.GENUINBIOTECH.COM



Western blotting analysis of 1 HeLa, 2 treated with LPS 100ng/mL 20min, using primary antibody at 1:1,000 dilution. Secondary antibody was diluted at 1:10,000