

# Anti-Phospho-ErbB-4 (Y1284) Rabbit Polyclonal Antibody



**Catalog #: U2262**

## Aliases

ERBB4; Erb-B2 Receptor Tyrosine Kinase 4; HER4; ALS19; V-Erb-B2 Avian Erythroblastic Leukemia Viral Oncogene Homolog 4; Tyrosine Kinase-Type Cell Surface Receptor HER4; Human Epidermal Growth Factor Receptor 4; Receptor Tyrosine-Protein Kinase ErbB-4; Proto-Oncogene-Like Protein C-ErbB-4; EC 2.7.10.1; P180erbB4; V-Erb-A Avian Erythroblastic Leukemia Viral Oncogene Homolog-Like 4; Avian Erythroblastic Leukemia Viral (V-Erb-B2) Oncogene Homolog 4; V-Erb-A Erythroblastic Leukemia Viral Oncogene Homolog 4; EC 2.7.10

## Background

Gene Name: ERBB4

NCBI Gene Entry: [2066](#)

UniProt Entry: [Q15303](#)

## Application Information

Molecular Weight: Predicted, 147 kDa; observed, 180 kDa

Clonality: Rabbit polyclonal antibody

Species Reactivity: Human, mouse, rat

Applications Tested: Western blotting (WB), immunohistochemistry (IHC), immunocytochemistry (IC)

## Immunogen

A synthesized peptide derived from human Phospho-ErbB-4 (Tyr1284)

## Isotype

Rabbit IgG

## Storage Buffer

Supplied in PBS containing 50% glycerol, 0.5% BSA and 0.02% sodium azide.

## Storage

Store at -20 °C for one year.

## Recommended Dilutions

Western Blotting (WB): 1:500-1:2,500

Immunohistochemistry (IHC): 1:100-1:300

Immunocytochemistry (IC): 1:200-1:1,000

---

### SUPPORT

SUPPORT@GENUINBIOTECH.COM  
TEL: +1-540-855-7041

### ORDERS

SALES@GENUINBIOTECH.COM  
FAX: +1-540-855-7041

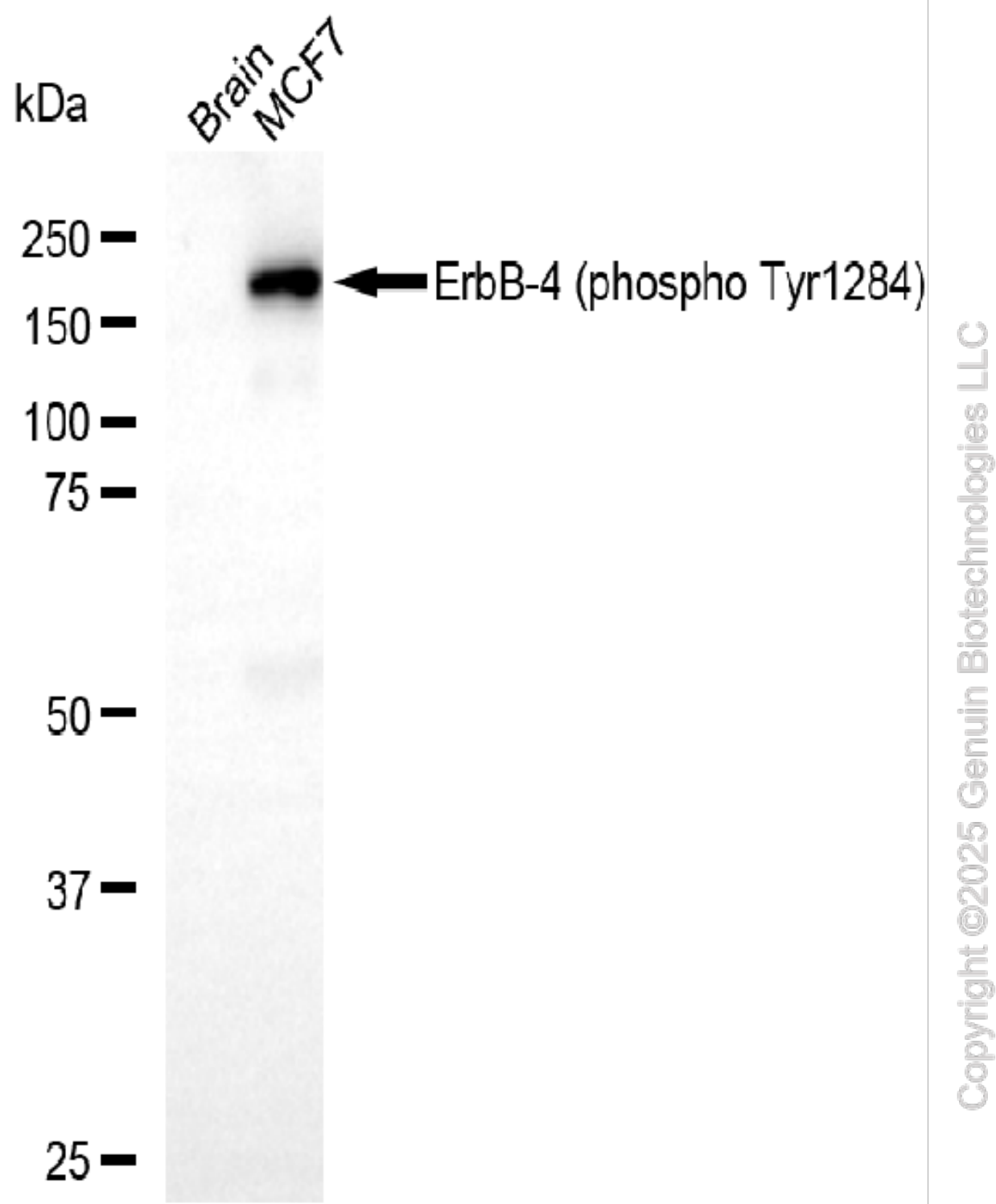
[WWW.GENUINBIOTECH.COM](http://WWW.GENUINBIOTECH.COM)

## Anti-Phospho-ErbB-4 (Y1284) Rabbit Polyclonal Antibody

PAGE 2

**Note:** This product is for research use only.

### Validation Data



Western blotting analysis using anti-Phospho-ErbB-4 (Tyr1284) antibody (Cat#U2262). Total

#### SUPPORT

SUPPORT@GENUINBIOTECH.COM  
TEL: +1-540-855-7041

#### ORDERS

SALES@GENUINBIOTECH.COM  
FAX: +1-540-855-7041

[WWW.GENUINBIOTECH.COM](http://WWW.GENUINBIOTECH.COM)

## **Anti-Phospho-ErbB-4 (Y1284) Rabbit Polyclonal Antibody**

PAGE 3

lysates (30 µg) were loaded and separated by SDS-PAGE. The blot was incubated with anti-Phospho-ErbB-4 (Tyr1284) antibody (Cat#U2262, 1:2,500) and HRP-conjugated goat anti-rabbit secondary antibody (Cat#201, 1:20,000) respectively. Image was developed using FeQ™ ECL Substrate Kit (Cat#226).

---

### **SUPPORT**

SUPPORT@GENUINBIOTECH.COM  
TEL: +1-540-855-7041

### **ORDERS**

SALES@GENUINBIOTECH.COM  
FAX: +1-540-855-7041

**WWW.GENUINBIOTECH.COM**