

Anti-Phospho-SREBP-1 (S439) Rabbit Polyclonal Antibody



Catalog #: U2265

Aliases

SREBF1; Sterol Regulatory Element Binding Transcription Factor 1; SREBP1; BHLHD1; Sterol Regulatory Element-Binding Protein 1; Class D Basic Helix-Loop-Helix Protein 1; SREBP-1c; SREBP1a; Sterol Regulatory Element-Binding Transcription Factor 1; SREBP-1; BHLHD1; IFAP2; HMD

Background

Gene Name: SREBF1

NCBI Gene Entry: [6720](#)

UniProt Entry: [P36956](#)

Application Information

Molecular Weight: Predicted, 122 kDa; observed, 122 kDa

Clonality: Rabbit polyclonal antibody

Species Reactivity: Human, rat

Applications Tested: Western blotting (WB), immunohistochemistry (IHC), immunocytochemistry (IC)

Immunogen

A synthesized peptide derived from human Phospho-SREBP-1 (Ser439)

Isotype

Rabbit IgG

Storage Buffer

Supplied in PBS containing 50% glycerol, 0.5% BSA and 0.02% sodium azide.

Storage

Store at -20 °C for one year.

Recommended Dilutions

Western Blotting (WB): 1:500-1:2,000

Immunohistochemistry (IHC): 1:100-1:300

Immunocytochemistry (IC): 1:50-1:200

SUPPORT

SUPPORT@GENUINBIOTECH.COM
TEL: +1-540-855-7041

ORDERS

SALES@GENUINBIOTECH.COM
FAX: +1-540-855-7041

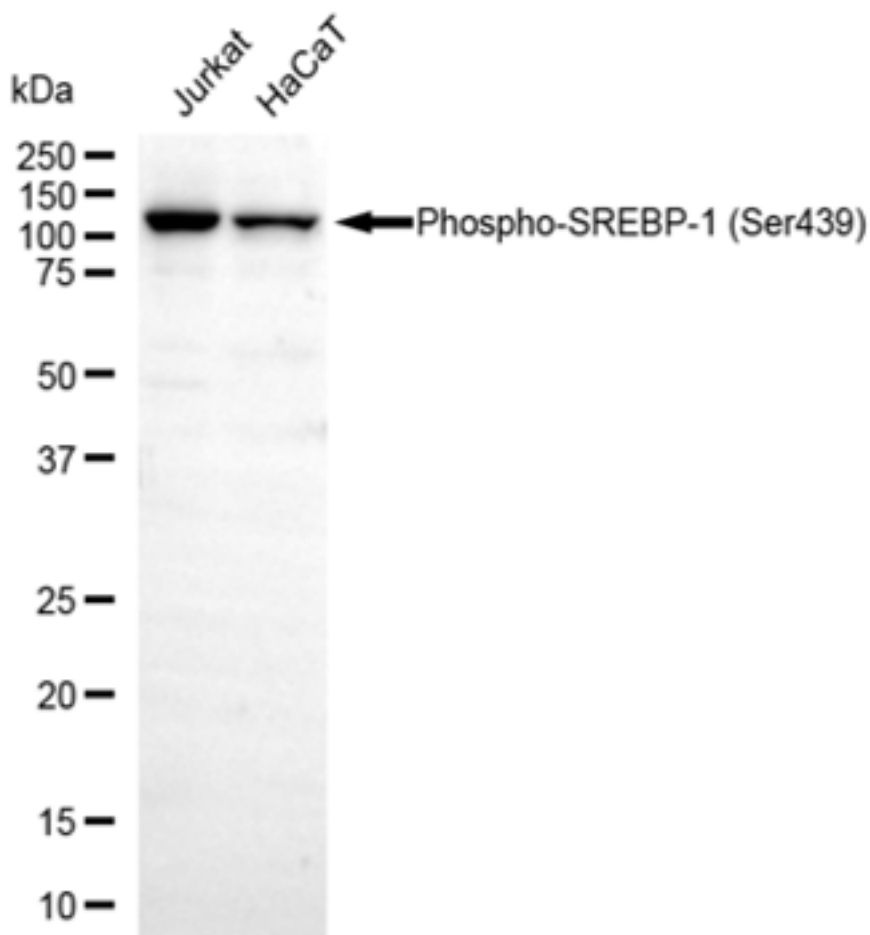
WWW.GENUINBIOTECH.COM

Anti-Phospho-SREBP-1 (S439) Rabbit Polyclonal Antibody

PAGE 2

Note: This product is for research use only.

Validation Data



Copyright ©2025 Genuin Biotechnologies LLC

Western blotting analysis using anti-Phospho-SREBP-1 (Ser439) antibody (Cat#U2265). Total lysates (30 µg) were loaded and separated by SDS-PAGE. The blot was incubated with anti-Phospho-SREBP-1 (Ser439) antibody (Cat#U2265, 1:2,500) and HRP-conjugated goat anti-rabbit secondary antibody (Cat#201, 1:20,000) respectively. Image was developed using FeQ™ ECL Substrate Kit (Cat#226).

SUPPORT

SUPPORT@GENUINBIOTECH.COM
TEL: +1-540-855-7041

ORDERS

SALES@GENUINBIOTECH.COM
FAX: +1-540-855-7041

WWW.GENUINBIOTECH.COM