

Anti-Phospho-CaMKK2 (S511) Rabbit Polyclonal Antibody



Catalog #: U2266

Aliases

CAMKK2; Calcium/Calmodulin Dependent Protein Kinase Kinase 2; CAMKKB; KIAA0787; CAMKK; Calcium/Calmodulin-Dependent Protein Kinase Kinase 2, Beta; Calcium/Calmodulin-Dependent Protein Kinase Kinase Beta; Calcium/Calmodulin-Dependent Protein Kinase Kinase 2; CaM-Kinase Kinase Beta; CaM-Kinase Kinase 2; CaM-KK Beta; MGC15254; CaM-KK 2; Calcium/Calmodulin-Dependent Protein Kinase Beta; CAMKK Beta Protein; EC 2.7.11.17; CaMKK Beta; EC 2.7.11; CaMKK 2

Background

Gene Name: CAMKK2

NCBI Gene Entry: [10645](#)

UniProt Entry: [Q96RR4](#)

Application Information

Molecular Weight: Predicted, 65 kDa; observed, 65 kDa

Clonality: Rabbit polyclonal antibody

Species Reactivity: Human, mouse, rat

Applications Tested: Western blotting (WB)

Immunogen

A synthesized peptide derived from human Phospho-CaMKK2 (S511)

Isotype

Rabbit IgG

Storage Buffer

Supplied in PBS containing 50% glycerol, 0.5% BSA and 0.02% sodium azide.

Storage

Store at -20 °C for one year.

Recommended Dilutions

Western Blotting (WB): 1:1,000-1:2,000

Note: This product is for research use only.

SUPPORT

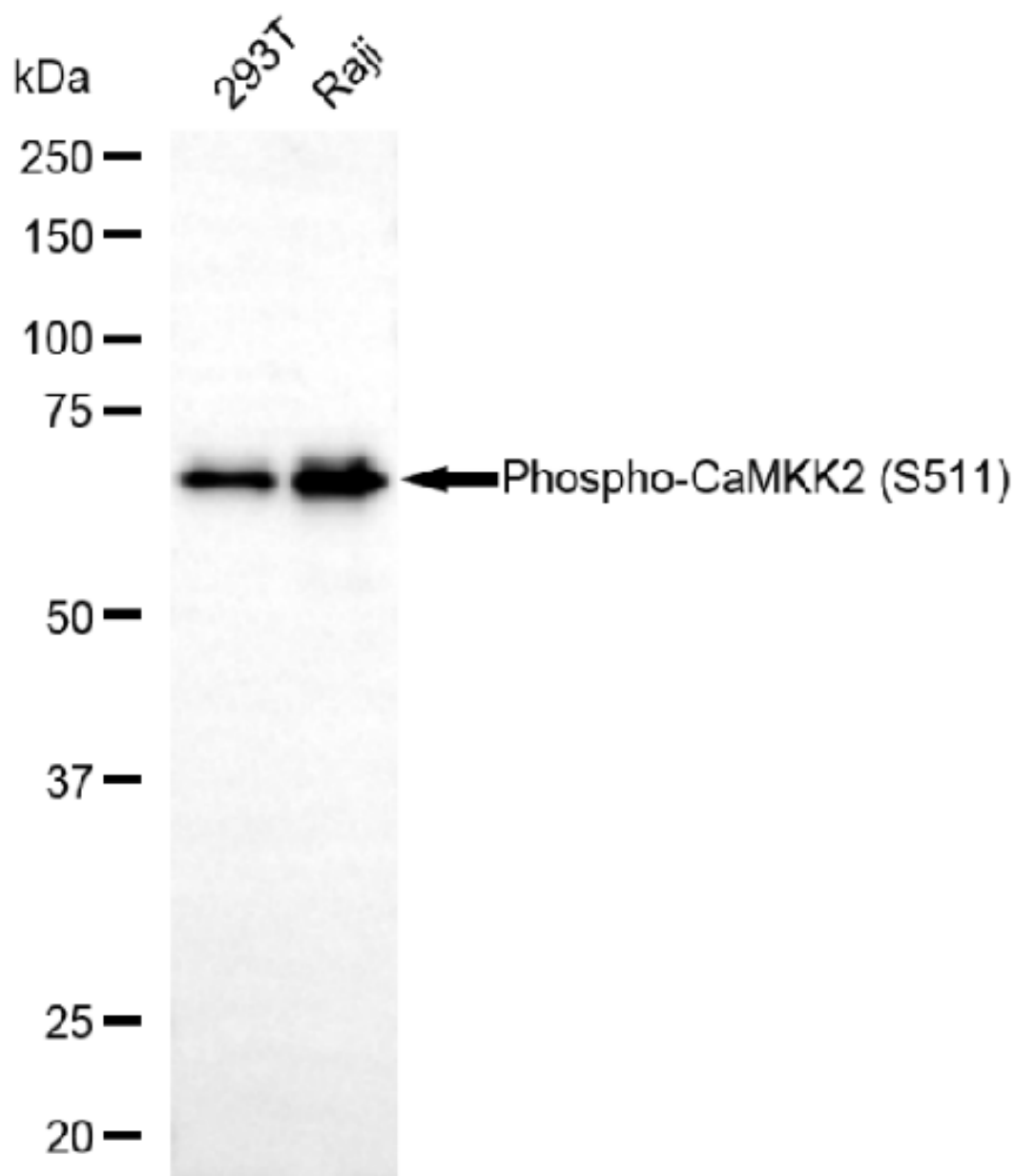
SUPPORT@GENUINBIOTECH.COM
TEL: +1-540-855-7041

ORDERS

SALES@GENUINBIOTECH.COM
FAX: +1-540-855-7041

WWW.GENUINBIOTECH.COM

Validation Data



Copyright ©2025 Genuin Biotechnologies LLC

Western blotting analysis using anti-Phospho-CaMKK2 (S511) antibody (Cat#U2266). Total lysates (30 µg) were loaded and separated by SDS-PAGE. The blot was incubated with anti-Phospho-CaMKK2 (S511) antibody (Cat#U2266, 1:2,500) and HRP-conjugated goat anti-rabbit secondary antibody (Cat#201, 1:20,000) respectively. Image was developed using FeQ™ ECL Substrate Kit (Cat#226).

SUPPORT

SUPPORT@GENUINBIOTECH.COM
TEL: +1-540-855-7041

ORDERS

SALES@GENUINBIOTECH.COM
FAX: +1-540-855-7041

WWW.GENUINBIOTECH.COM