

# Anti-Histone H3 (Tri Methyl Lys36) Mouse Monoclonal Antibody



**Catalog #: U2267**

## Aliases

H3C1; H3 Clustered Histone 1; HIST1H3A; H3/A; H3FA; Histone Cluster 1 H3 Family Member A; H3 Histone Family, Member A; Histone Cluster 1, H3a; Histone 1, H3a; Histone H3.1; Histone H3/A; H3FC HIST1H3C; Histone H3/B; Histone H3/C; Histone H3/D; Histone H3/F; Histone H3/H; Histone H3/I; Histone; H3/J; Histone H3/K; Histone H3/L; HIST1H3B; HIST1H3D; HIST1H3E; HIST1H3F; HIST1H3G; HIST1H3H; HIST1H3I; HIST1H3J; H3C10; H3C11; H3C12; H3C2; H3C3; H3C4; H3C6; H3C7; H3C8; H3FL; H3FB; H3FD; H3FI; H3FH; H3FK; H3FF; H3FJ; H3C13; H3 Clustered Histone 13; HIST2H3D; Histone Cluster 2 H3 Family Member D; H3-Clustered Histone 14; H3-Clustered Histone 15; Histone Cluster 2, H3d; Histone 2, H3d; Histone H3.2; H3-Clustered Histone 13; Histone H3/M; Histone H3/O; HIST2H3A; HIST2H3C; H3C14; H3C15; H3F2; H3FM; H3-3A; H3.3 Histone A; H3.3A; H3F3A; H3F3; H3 Histone Family Member 3A; H3 Histone, Family 3A; Histone H3.3; BRYLIB1; H3-3B; H3.3B; H3F3B

## Background

Gene Name: H3C1/H3C13/H3-3A

NCBI Gene Entry: [8350/8351/8352/8353/8354/8355/8356/8357/8358/8968](#)

UniProt Entry: [P68431/Q71DI3/P84243](#)

## Application Information

Molecular Weight: Predicted, 15 kDa; observed, 15 kDa

Clonality: Mouse monoclonal antibody

Clone ID: 25GB7005

Species Reactivity: Human, Mouse, Rat

Applications Tested: Western Blotting (WB), Immunoprecipitation (IP)

## Immunogen

A synthesized peptide derived from human Histone H3 (Tri Methyl Lys36)

## Isotype

Mouse IgG

## Storage Buffer

Supplied in PBS containing 50% glycerol, 0.5% BSA and 0.02% sodium azide.

## Storage

---

### SUPPORT

SUPPORT@GENUINBIOTECH.COM  
TEL: +1-540-855-7041

### ORDERS

SALES@GENUINBIOTECH.COM  
FAX: +1-540-855-7041

[WWW.GENUINBIOTECH.COM](http://WWW.GENUINBIOTECH.COM)

# Anti-Histone H3 (Tri Methyl Lys36) Mouse Monoclonal Antibody

PAGE 2

Store at -20 °C for one year.

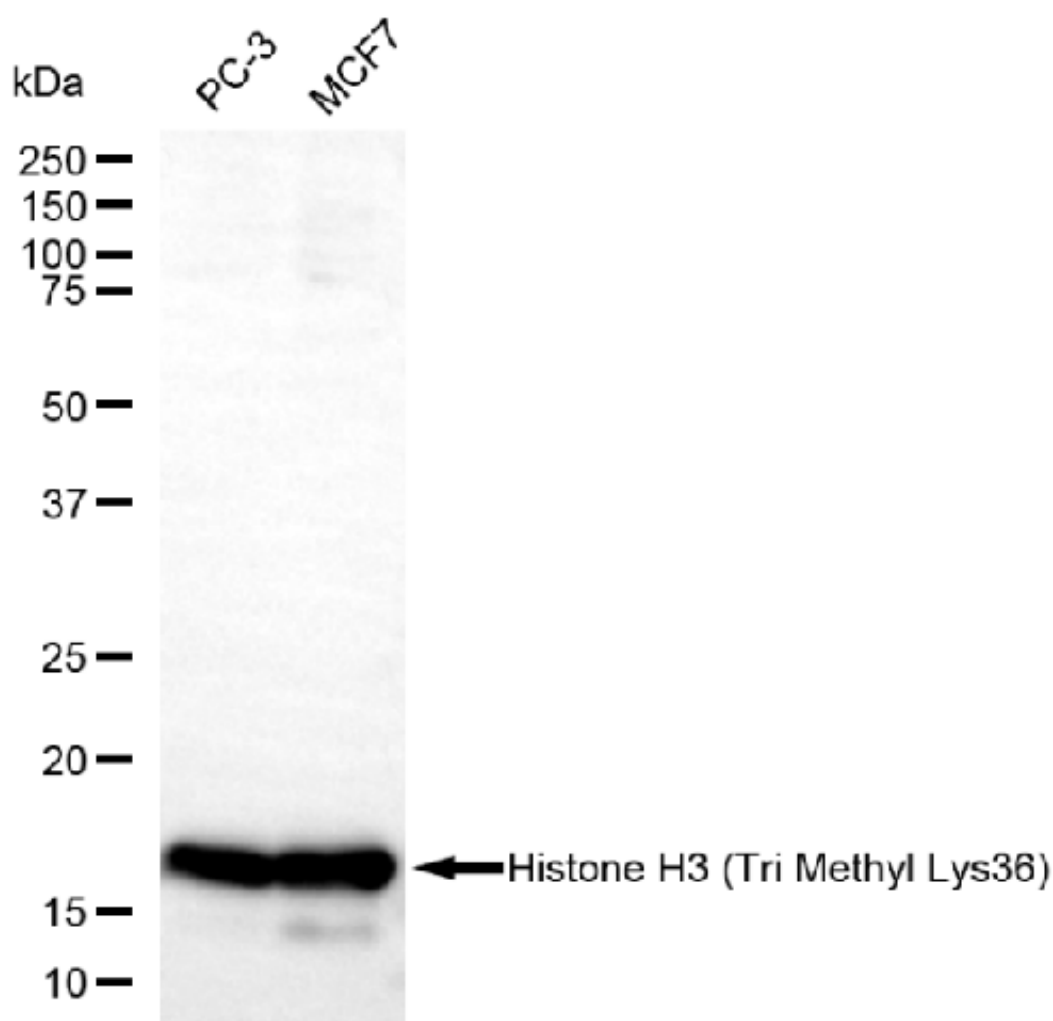
## Recommended Dilutions

Western Blotting (WB): 1:1,000-1:3,000

Immunoprecipitation (IP): 1:50-1:200

**Note:** This product is for research use only.

## Validation Data



Copyright ©2025 Genuin Biotechnologies LLC

Western blotting analysis using anti-Histone H3 (Tri Methyl Lys36) antibody (Cat#U2267). Total lysates (30 µg) were loaded and separated by SDS-PAGE. The blot was incubated with anti-Histone H3 (Tri Methyl Lys36) antibody (Cat#U2267, 1:2,500) and HRP-conjugated goat anti-mouse secondary antibody (Cat#101, 1:20,000) respectively. Image was developed using FeQ™ ECL Substrate Kit (Cat#226).

### SUPPORT

SUPPORT@GENUINBIOTECH.COM  
TEL: +1-540-855-7041

### ORDERS

SALES@GENUINBIOTECH.COM  
FAX: +1-540-855-7041

WWW.GENUINBIOTECH.COM

---

**SUPPORT**

SUPPORT@GENUINBIOTECH.COM  
TEL: +1-540-855-7041

**ORDERS**

SALES@GENUINBIOTECH.COM  
FAX:+1-540-855-7041

**WWW.GENUINBIOTECH.COM**