

Anti-Phospho-RSK1 (T359/S363) Rabbit Polyclonal Antibody



Catalog #: U2268

Aliases

RPS6KA1; Ribosomal Protein S6 Kinase A1; RSK1; MAPKAPK1; P90Rsk; HU-1; MAP Kinase-Activated Protein Kinase 1a; 90 KDa Ribosomal Protein S6 Kinase 1; Ribosomal Protein S6 Kinase Alpha-1; MAPK-Activated Protein Kinase 1a; Ribosomal S6 Kinase 1; MAPKAP Kinase 1a; EC 2.7.11.1; MAPKAPK-1a; MAPKAPK1A; P90-RSK 1; P90RSK1; P90S6K; RSK-1; DJ590P13.1 (Ribosomal Protein S6 Kinase, 90kD, Polypeptide 1); Ribosomal Protein S6 Kinase, 90kDa, Polypeptide 1; Ribosomal Protein S6 Kinase, 90kD, Polypeptide 1; S6K-Alpha 1; S6K-Alpha-1; EC 2.7.11; RSK

Background

Gene Name: RPS6KA1

NCBI Gene Entry: [6195](#)

UniProt Entry: [Q15418](#)

Application Information

Molecular Weight: Predicted, 83 kDa; observed, 72 kDa

Clonality: Rabbit polyclonal antibody

Species Reactivity: Human, mouse, rat

Applications Tested: Western blotting (WB), immunohistochemistry (IHC), immunocytochemistry (IC)

Immunogen

A synthesized peptide derived from human phospho-RSK1 (T359/S363)

Isotype

Rabbit IgG

Storage Buffer

Supplied in PBS containing 50% glycerol, 0.5% BSA and 0.02% sodium azide.

Storage

Store at -20 °C for one year.

Recommended Dilutions

Western Blotting (WB): 1:500-1:2,500

Immunohistochemistry (IHC): 1:100-1:300

SUPPORT

SUPPORT@GENUINBIOTECH.COM
TEL: +1-540-855-7041

ORDERS

SALES@GENUINBIOTECH.COM
FAX: +1-540-855-7041

WWW.GENUINBIOTECH.COM

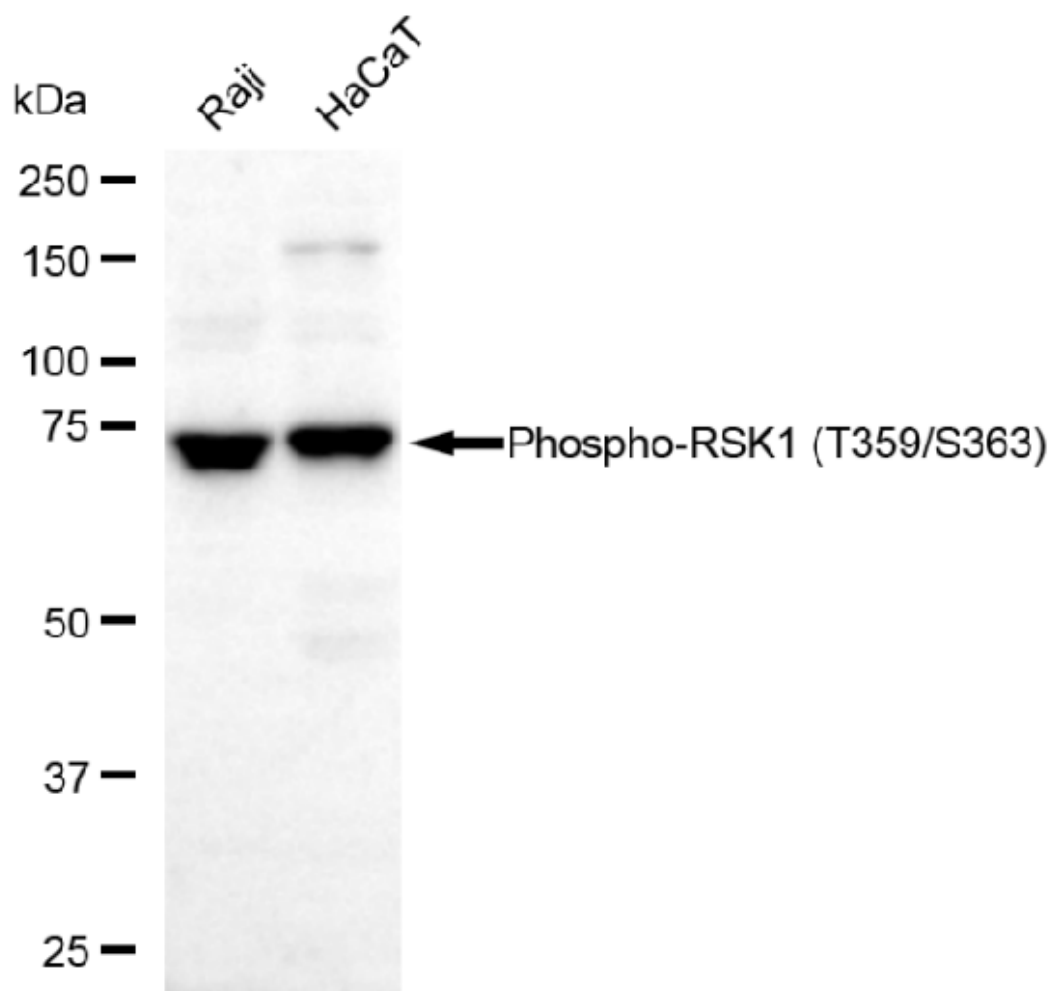
Anti-Phospho-RSK1 (T359/S363) Rabbit Polyclonal Antibody

PAGE 2

Immunocytochemistry (IC): 1:50-1:200

Note: This product is for research use only.

Validation Data



Copyright ©2025 Genuin Biotechnologies LLC

Western blotting analysis using anti-Phospho-RSK1 (T359/S363) antibody (Cat#U2268). Total lysates (30 µg) were loaded and separated by SDS-PAGE. The blot was incubated with anti-Phospho-RSK1 (T359/S363) antibody (Cat#U2268, 1:2,500) and HRP-conjugated goat anti-rabbit secondary antibody (Cat#201, 1:20,000) respectively. Image was developed using FeQ™ ECL Substrate Kit (Cat#226).

SUPPORT

SUPPORT@GENUINBIOTECH.COM
TEL: +1-540-855-7041

ORDERS

SALES@GENUINBIOTECH.COM
FAX: +1-540-855-7041

WWW.GENUINBIOTECH.COM