

# Anti-Phospho-NF- $\kappa$ B p65 (S536) Rabbit Polyclonal Antibody



**Catalog #: U2271**

## Aliases

RELA; RELA Proto-Oncogene, NF-KB Subunit; Nuclear Factor Of Kappa Light Polypeptide Gene Enhancer In B-Cells 3; NFKB3; P65; V-Rel Avian Reticuloendotheliosis Viral Oncogene Homolog A; Nuclear Factor NF-Kappa-B P65 Subunit; Transcription Factor P65; NF-Kappa-B Transcription Factor P65; NF-Kappa-B P65delta3; AIF3BL3; CMCU

## Background

Gene Name: RELA

NCBI Gene Entry: [5970](#)

UniProt Entry: [Q04206](#)

## Application Information

Molecular Weight: Predicted, 60 kDa; observed, 60 kDa

Clonality: Rabbit polyclonal antibody

Species Reactivity: Human, mouse, rat, monkey

Applications Tested: Western blotting (WB), immunohistochemistry (IHC), immunocytochemistry (IC), immunoprecipitation (IP)

## Immunogen

A synthesized peptide derived from human Phospho-NF- $\kappa$ B p65 (S536)

## Isotype

Rabbit IgG

## Storage Buffer

Supplied in PBS containing 50% glycerol, 0.5% BSA and 0.02% sodium azide.

## Storage

Store at -20 °C for one year.

## Recommended Dilutions

Western Blotting (WB): 1:500-1:1,000

Immunohistochemistry (IHC): 1:100-1:300

Immunocytochemistry (IC): 1:50-1:200

Immunoprecipitation (IP): 2-5  $\mu$ g/mg

---

### SUPPORT

SUPPORT@GENUINBIOTECH.COM  
TEL: +1-540-855-7041

### ORDERS

SALES@GENUINBIOTECH.COM  
FAX: +1-540-855-7041

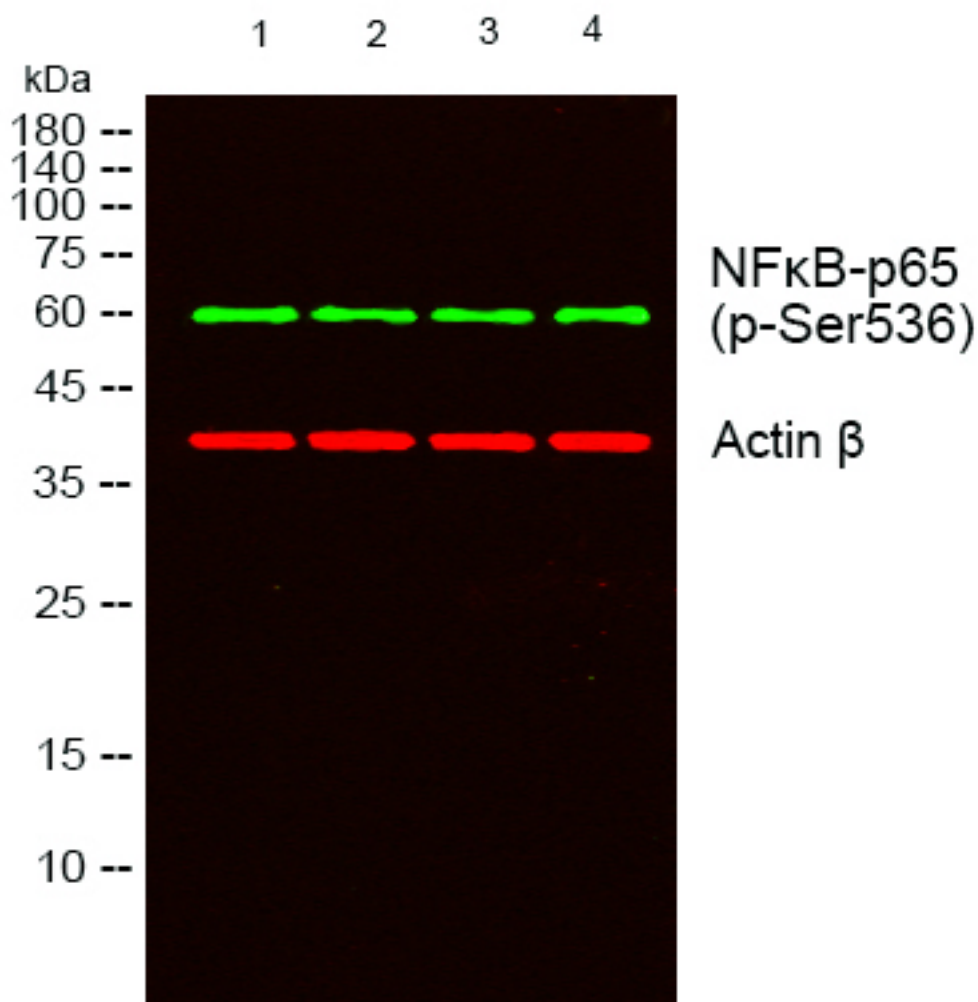
[WWW.GENUINBIOTECH.COM](http://WWW.GENUINBIOTECH.COM)

## Anti-Phospho-NF-κB p65 (S536) Rabbit Polyclonal Antibody

PAGE 2

**Note:** This product is for research use only.

### Validation Data



Western blotting analysis of lysates from 1) A549, 2) 3T3, 3) 293T, 4) K562 cells, (Green) primary antibody was diluted at 1:1,000, 4°C over night, secondary antibody was diluted at 1:10,000, 37°C 1 hour. (Red) Actin β antibody was diluted at 1:5,000 as loading control, 4°C over night, secondary antibody was diluted at 1:10,000, 37°C 1 hour.

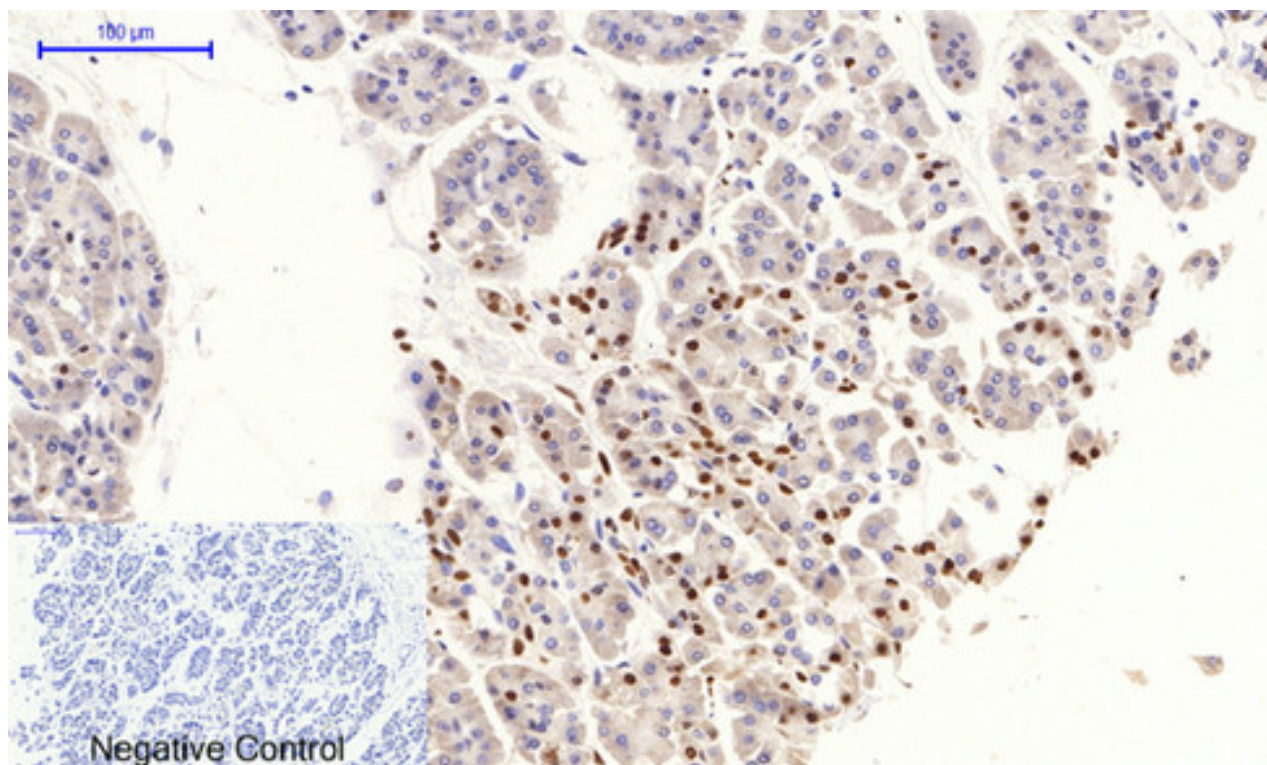
#### SUPPORT

SUPPORT@GENUINBIOTECH.COM  
TEL: +1-540-855-7041

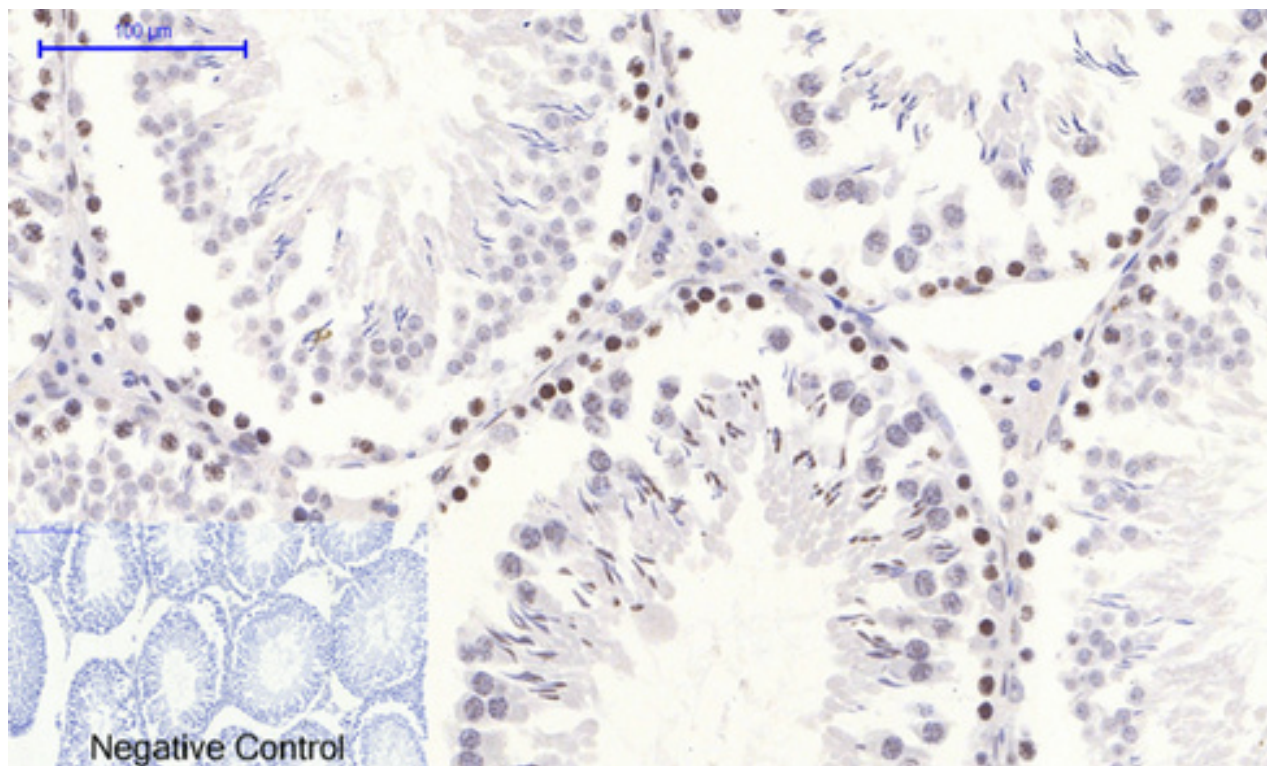
#### ORDERS

SALES@GENUINBIOTECH.COM  
FAX: +1-540-855-7041

[WWW.GENUINBIOTECH.COM](http://WWW.GENUINBIOTECH.COM)



Immunohistochemical analysis of paraffin-embedded Human-stomach-cancer tissue. Phospho-NFκB-p65 (S536) antibody was diluted at 1:200 (4°C, overnight). Sodium citrate pH 6.0 was used for antibody retrieval (>98°C, 20min). Secondary antibody was diluted at 1:200 (room temperature, 30min). Negative control was used by secondary antibody only.

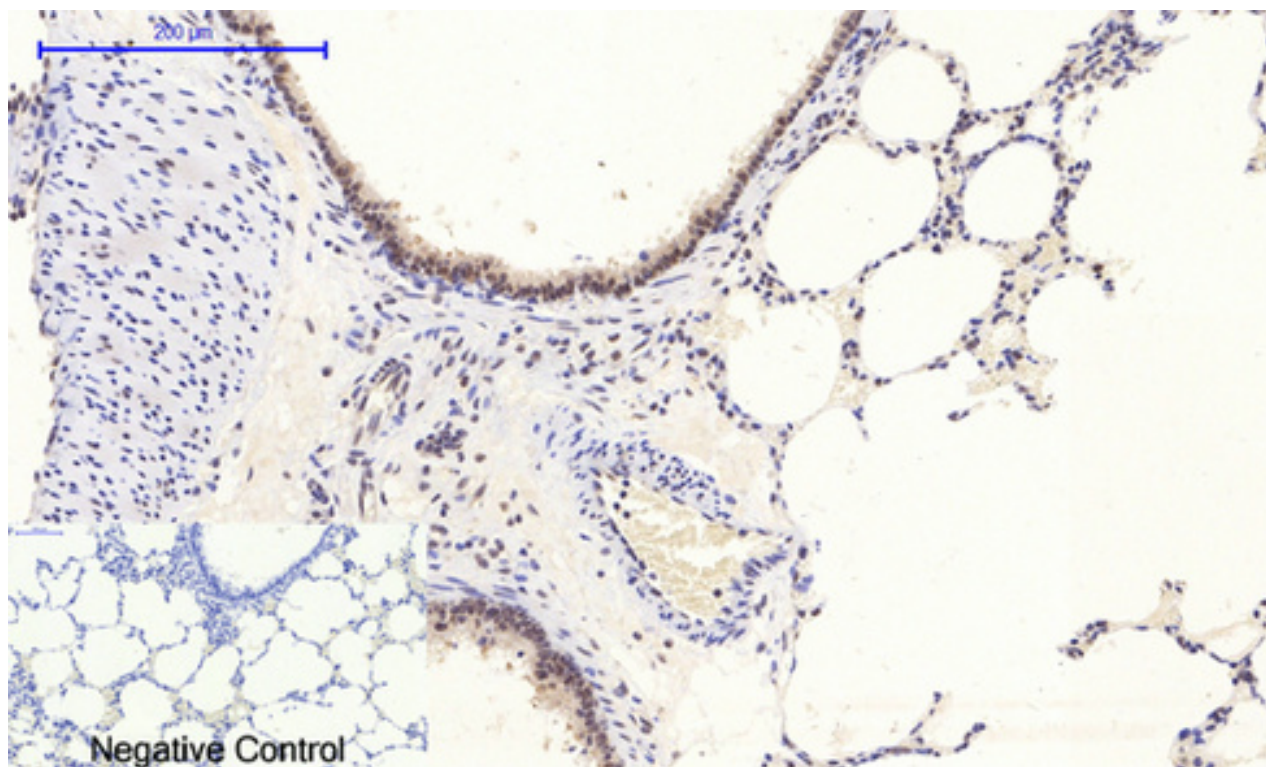




## Anti-Phospho-NF- $\kappa$ B p65 (S536) Rabbit Polyclonal Antibody

PAGE 4

Immunohistochemical analysis of paraffin-embedded Rat-testis tissue. Phospho-NF $\kappa$ B-p65 (S536) antibody was diluted at 1:200 (4°C, overnight). Sodium citrate pH 6.0 was used for antibody retrieval (>98°C, 20min). Secondary antibody was diluted at 1:200 (room temperature, 30min). Negative control was used by secondary antibody only.



Immunohistochemical analysis of paraffin-embedded Rat-lung tissue. Phospho-NF $\kappa$ B-p65 (S536) antibody was diluted at 1:200 (4°C, overnight). Sodium citrate pH 6.0 was used for antibody retrieval (>98°C, 20min). Secondary antibody was diluted at 1:200 (room temperature, 30min). Negative control was used by secondary antibody only.

---

### SUPPORT

SUPPORT@GENUINBIOTECH.COM  
TEL: +1-540-855-7041

### ORDERS

SALES@GENUINBIOTECH.COM  
FAX: +1-540-855-7041

[WWW.GENUINBIOTECH.COM](http://WWW.GENUINBIOTECH.COM)