

# Anti-Phospho-MOB1 (T12) Rabbit Polyclonal Antibody



**Catalog #: U2274**

## Aliases

MOB1A; MOB Kinase Activator 1A; MOBKL1B; C2orf6; MOBK1B; Mob4B; Mats1; MOB1; Mps One Binder Kinase Activator-Like 1B; Mob1 Homolog 1B; Mob1 Alpha; FLJ10788; FLJ11595; MOB1, Mps One Binder Kinase Activator-Like 1B (Yeast); MOB1, Mps One Binder Kinase Activator-Like 1B; MOB1 Mps One Binder Homolog A (Yeast); Chromosome 2 Open Reading Frame 6; MOB1 Mps One Binder Homolog A; MABKL1B; MOB4B; Mob1A

## Background

Gene Name: MOB1A

NCBI Gene Entry: [55233](#)

UniProt Entry: [Q9H8S9](#)

## Application Information

Molecular Weight: Predicted, 25 kDa; observed, 23 kDa

Clonality: Rabbit polyclonal antibody

Species Reactivity: Human, mouse, rat

Applications Tested: Western blotting (WB), immunohistochemistry (IHC)

## Immunogen

A synthesized peptide derived from human Phospho-MOB1 (T12)

## Isotype

Rabbit IgG

## Storage Buffer

Supplied in PBS containing 50% glycerol, 0.5% BSA and 0.02% sodium azide.

## Storage

Store at -20 °C for one year.

## Recommended Dilutions

Western Blotting (WB): 1:500-1:2,000

Immunohistochemistry (IHC): 1:50-1:300

**Note:** This product is for research use only.

---

### SUPPORT

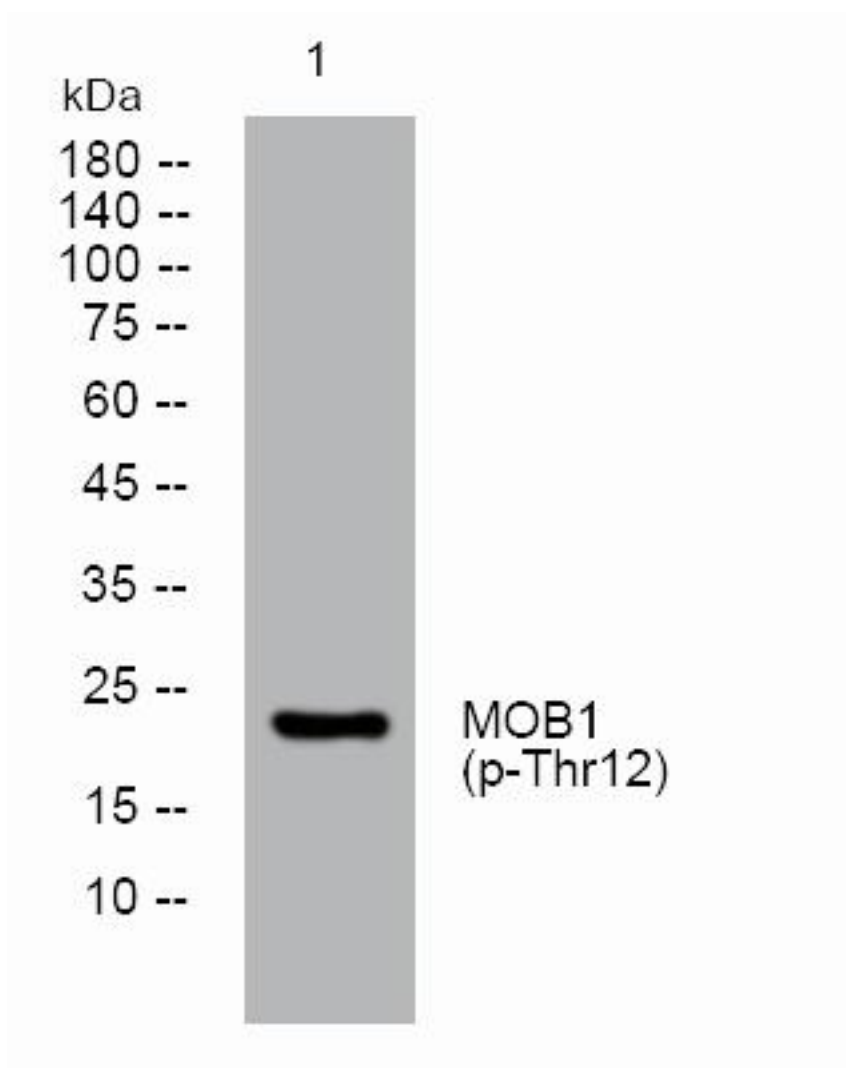
SUPPORT@GENUINBIOTECH.COM  
TEL: +1-540-855-7041

### ORDERS

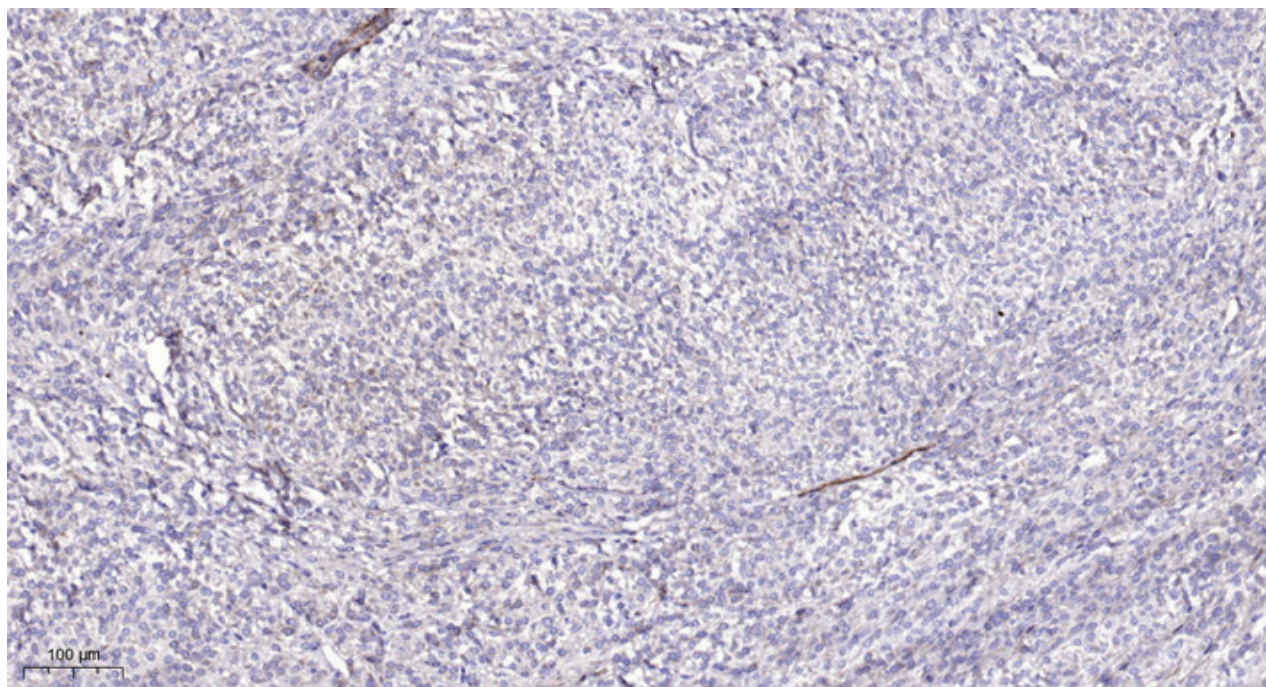
SALES@GENUINBIOTECH.COM  
FAX: +1-540-855-7041

[WWW.GENUINBIOTECH.COM](http://WWW.GENUINBIOTECH.COM)

**Validation Data**



Western blotting analysis of lysates from U2OS cells, primary antibody was diluted at 1:1,000, 4°C over night.



Immunohistochemical analysis of paraffin-embedded human Colon cancer. Antibody was diluted at 1:200 (4°C overnight). Tris-EDTA, pH 9.0 was used for antigen retrieval. Secondary antibody was diluted at 1:200 (room temperature, 45min).