

Anti-Phospho-Parkin (S65) Rabbit Polyclonal Antibody



Catalog #: U2278

Aliases

PRKN; Parkin RBR E3 Ubiquitin Protein Ligase; Parkin; AR-JP; PARK2; PDJ; Parkinson Disease (Autosomal Recessive, Juvenile) 2, Parkin; Parkinson Protein 2, E3 Ubiquitin Protein Ligase (Parkin); Parkinson Juvenile Disease Protein 2; E3 Ubiquitin-Protein Ligase Parkin; Parkinson Protein 2 E3 Ubiquitin Protein Ligase; Parkin RBR E3 Ubiquitin-Protein Ligase; Parkinson Disease Protein 2; E3 Ubiquitin Ligase; EC 2.3.2.31; LPRS2

Background

NCBI Gene Entry: [5071](#)

UniProt Entry: [O60260](#)

Application Information

Molecular Weight: Predicted, 52 kDa; observed, 50 kDa

Clonality: Rabbit polyclonal antibody

Species Reactivity: Human, Mouse

Applications Tested: Western Blotting (WB), Immunohistochemistry (IHC), Immunocytochemistry (IC)

Immunogen

A synthesized peptide derived from human PRKN

Isotype

Rabbit IgG

Storage Buffer

Supplied in PBS (pH 7.4) containing 50% glycerol, and 0.02% sodium azide.

Storage

Store at -20 °C for one year.

Recommended Dilutions

Western Blotting (WB): 1:500-1:2,500

Note: This product is for research use only.

Validation Data

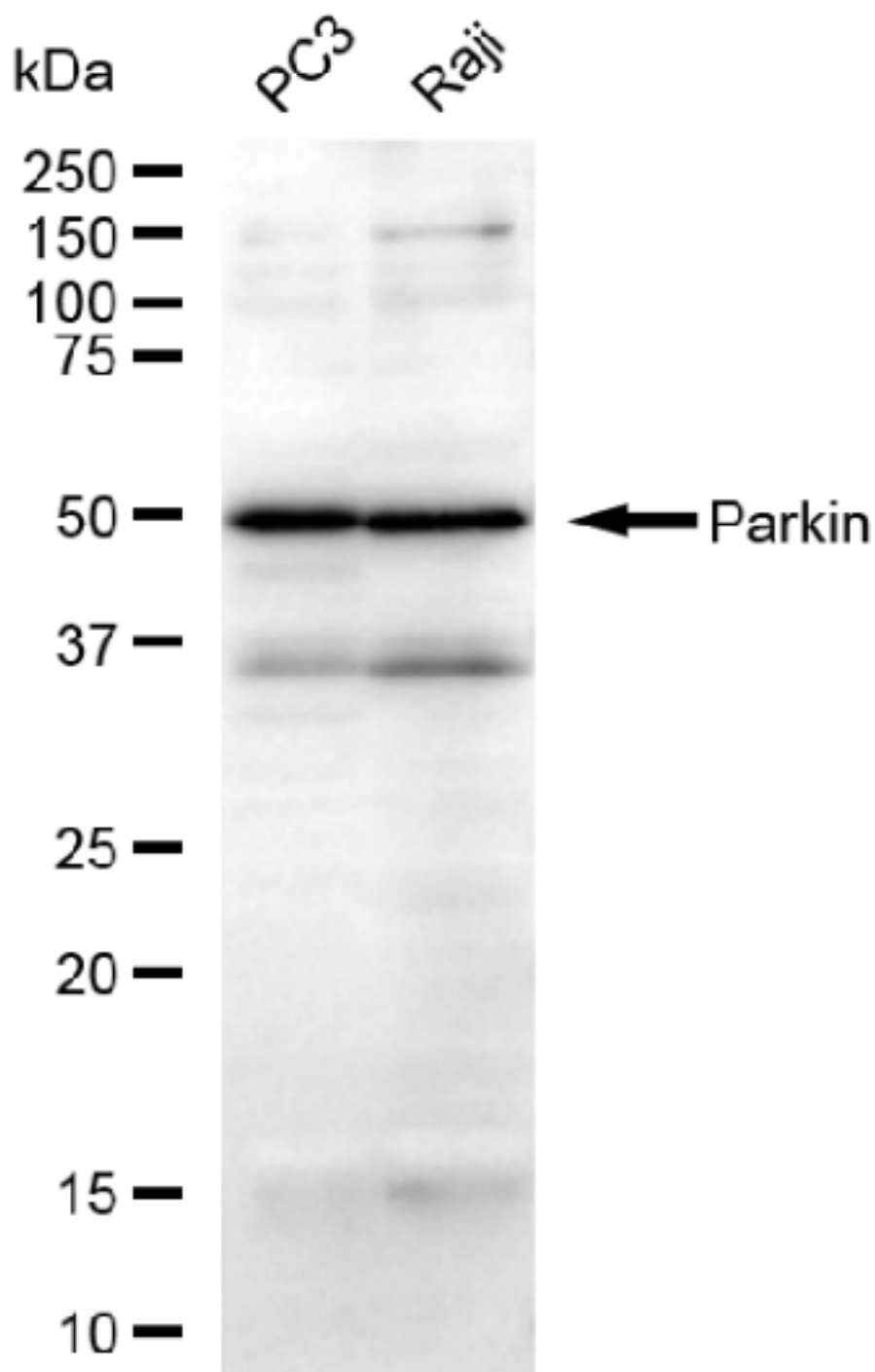
SUPPORT

SUPPORT@GENUINBIOTECH.COM
TEL: +1-540-855-7041

ORDERS

SALES@GENUINBIOTECH.COM
FAX: +1-540-855-7041

WWW.GENUINBIOTECH.COM



Copyright ©2025 Genuin Biotechnologies LLC

Western blotting analysis using anti-Phospho-Parkin (S65) antibody (Cat#U2278). Total lysates (30 µg) were loaded and separated by SDS-PAGE. The blot was incubated with anti-Phospho-Parkin (S65) antibody (Cat#U2278, 1:2,500) and HRP-conjugated goat anti-rabbit secondary antibody (Cat#201, 1:20,000) respectively. Image was developed using FeQ™ ECL Substrate Kit (Cat#226).

SUPPORT

SUPPORT@GENUINBIOTECH.COM
TEL: +1-540-855-7041

ORDERS

SALES@GENUINBIOTECH.COM
FAX: +1-540-855-7041

WWW.GENUINBIOTECH.COM