

Anti-Phospho-LATS1 (T1079) Rabbit Polyclonal Antibody



Catalog #: U2284

Aliases

LATS1; Large Tumor Suppressor Kinase 1; WARTS; LATS (Large Tumor Suppressor, Drosophila) Homolog 1; Serine/Threonine-Protein Kinase LATS1; Large Tumor Suppressor Homolog 1; WARTS Protein Kinase; EC 2.7.11.1; H-Warts; LATS, Large Tumor Suppressor, Homolog 1 (Drosophila); LATS, Large Tumor Suppressor, Homolog 1; EC 2.7.11; Wts

Background

Gene Name: LATS1

NCBI Gene Entry: [9113](#)

UniProt Entry: [O95835](#)

Application Information

Molecular Weight: Predicted, 127 kDa; observed, 140 kDa

Clonality: Rabbit polyclonal antibody

Species Reactivity: Human, mouse

Applications Tested: Western blotting (WB), immunohistochemistry (IHC)

Immunogen

A synthesized peptide derived from human Phospho-LATS1 (T1079)

Isotype

Rabbit IgG

Storage Buffer

Supplied in PBS containing 50% glycerol, 0.5% BSA and 0.02% sodium azide.

Storage

Store at -20 °C for one year.

Recommended Dilutions

Western Blotting (WB): 1:500-1:2,000

Immunohistochemistry (IHC): 1:50-1:300

Note: This product is for research use only.

Validation Data

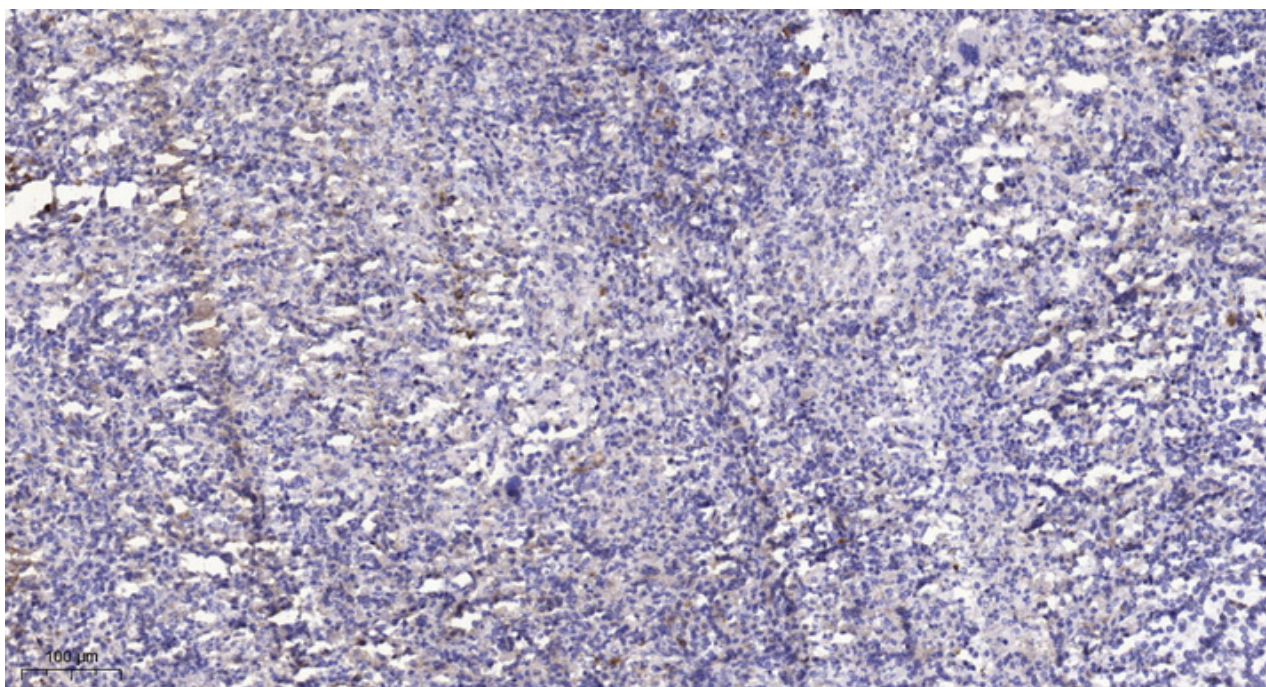
SUPPORT

SUPPORT@GENUINBIOTECH.COM
TEL: +1-540-855-7041

ORDERS

SALES@GENUINBIOTECH.COM
FAX: +1-540-855-7041

WWW.GENUINBIOTECH.COM



Immunohistochemical analysis of paraffin-embedded human spleen. Antibody was diluted at 1:200 (4°C overnight). Tris-EDTA, pH 9.0 was used for antigen retrieval. Secondary antibody was diluted at 1:200 (room temperature, 45min).