

WB-Validated ISG15 Lentiviral shRNA Knockdown Kit



Catalog #: V62197

Aliases

ISG15; ISG15 Ubiquitin Like Modifier; UCRP; IFI15; G1P2; Interferon, Alpha-Inducible Protein (Clone IFI-15K); Ubiquitin Cross-Reactive Protein; Ubiquitin-Like Protein ISG15; HUCRP; IP17; Interferon-Induced 17-KDa/15-KDa Protein; Interferon-Stimulated Protein, 15 KDa; Interferon-Induced 15 KDa Protein; Interferon-Induced 17 KDa Protein; IMD38

Background

Gene Name: ISG15

NCBI Gene Entry: 9636

Storage

Store at -80 °C for one year.

Kit Components

1. WB-Validated ISG15 shRNA lentiviral particles (4 mL)
2. Non-Target shRNA lentiviral particles (4 mL)
3. Verification Tool: KD-Validated Anti-ISG15 Rabbit mAb #62197 (5 µL)

Tested Cell Line

HepG2

Validation Methods

RT-qPCR; Western Blotting (WB)

Shipping

Shipped with dry ice. Immediately store the product in a standard freezer at -80°C upon receipt.

Instructions For Use

The following protocol uses HepG2 cell as an example assuming your cell culture medium is DMEM-based.

1. Release 0.5 million HepG2 cells into a 35 mm tissue culture dish in 2 mL of the growth medium (DMEM containing 10% FBS and 1% pen/strep). Cell density should reach 50-60% confluence the following day.
2. 24 h after cell release, pre-warm the shRNA lentiviral medium to 37°C.
3. Discard 1 mL of the original growth medium of the 35 mm dish.
4. Using a serological pipette, gently mix the lentiviral solution 3 times.

SUPPORT

SUPPORT@GENUINBIOTECH.COM
TEL: +1-540-855-7041

ORDERS

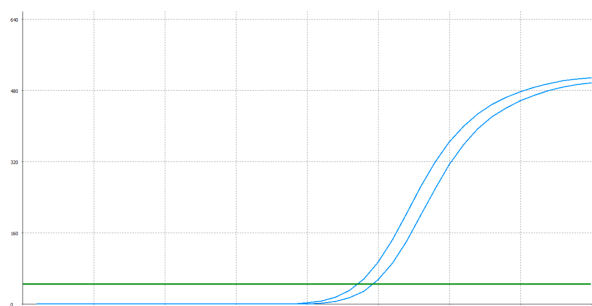
SALES@GENUINBIOTECH.COM
FAX: +1-540-855-7041

WWW.GENUINBIOTECH.COM

5. Carefully add 1 mL of the lentiviral solution to the well. Tip: To prevent splashing, add the solution to the dish along the wall.
6. Add a polybrene stock solution to the culture medium at a final concentration of 5 µg/mL. Gently swirl the dish to mix.
7. 48 h after cell release, without discarding the original medium, add another 1 mL of lentiviral medium directly into the dish.
8. Add an additional polybrene stock solution into the dish to obtain a final concentration of 5 µg/mL. Tip: Now, the medium in the dish should be a total of 3 mL.
9. 72 h after cell release, cells may reach confluence. Trypsinize the cells off the 35 mm dish and culture those cells in a 60 mm dish.
10. Add puromycin to the dish at a final concentration of 4 µg/mL. Tip: To assess the efficacy of puromycin selection, culture a dish of wild-type HepG2 cells as a negative control.
11. Allow puromycin selection for 48 h. Almost all wild-type HepG2 cells should die, while the dish infected with lentiviruses should have some remaining cells.
12. Replace the medium with regular growth medium without puromycin and allow the cells to grow to confluence before harvesting or staining.

Note: 1. This product is for research use only.
2. This product is only supplied to end users.
3. Do not use this product for commercial.

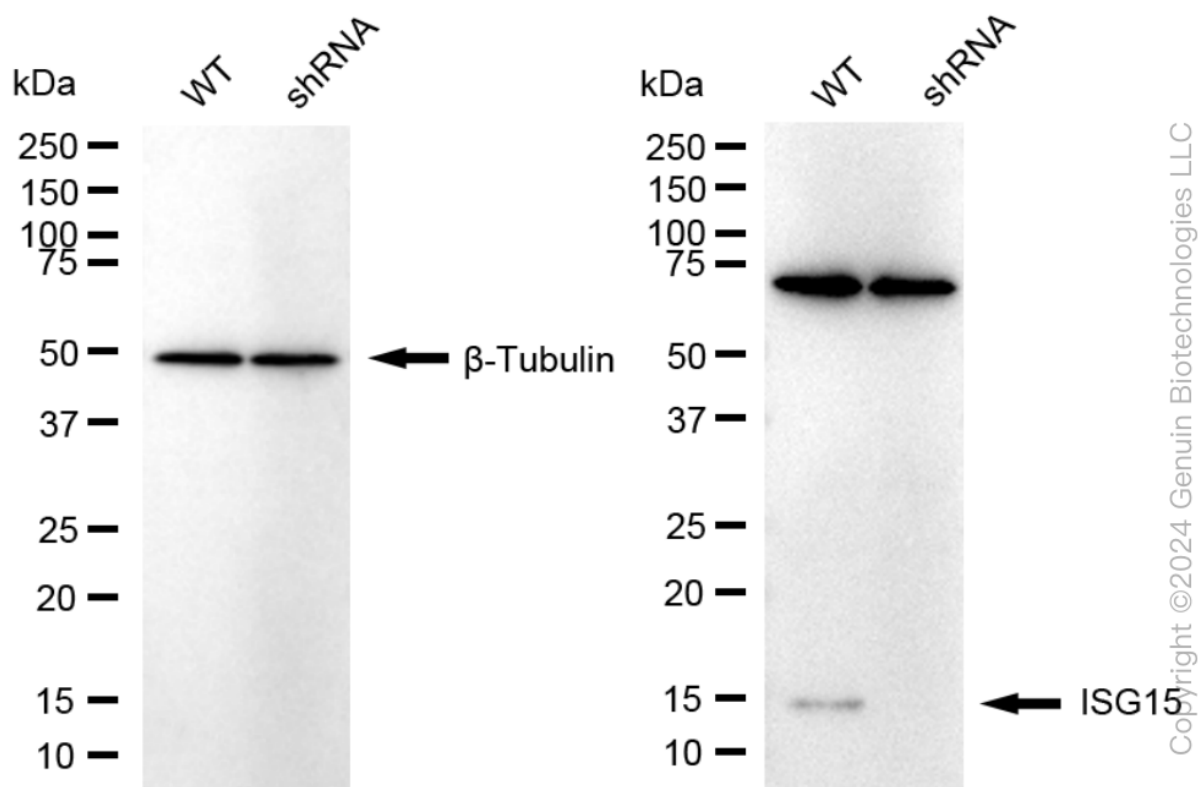
Validation Data



Genotype	Ct Value
Wild-Type	23.20
Knock-Down	24.23
$\Delta Ct (Ct_{KD} - Ct_{WT})$	1.03
% mRNA Reduction	↓ 51%

Copyright ©2025 Genuin Biotechnologies LLC

RT-qPCR analysis. HepG2 cells were infected with ISG15-specific shRNA lentiviral particles, total RNA was extracted from wild-type and knockdown cells, RT-qPCR was performed using gene-specific primers. $\Delta Ct (Ct_{KD} - Ct_{WT})$ was used to calculate mRNA reduction (%) between wild-type and knockdown cells using the following formula: $(1 - 1/2^{\Delta Ct}) \times 100\%$.



Western blotting analysis. ISG15 protein expression in wild-type (WT) and shRNA knockdown (KD) HepG2 cells was detected using Western blotting. β -Tubulin served as a loading control. The blots were incubated with primary antibodies against ISG15 and β -Tubulin, respectively, followed by incubating with HRP-conjugated goat anti-rabbit secondary antibody. Images were developed using FeQ™ ECL Substrate Kit.