

WB-Validated ASCC2 Lentiviral shRNA Knockdown Kit



Catalog #: V63525

Aliases

ASCC2; Activating Signal Cointegrator 1 Complex Subunit 2; ASC1p100; ASC-1 Complex Subunit P100; Trip4 Complex Subunit P100; DKFZp586O0223; FLJ21588; ASC 1 Complex Subunit P100; ASC1P100; P100; RQT3

Background

Gene Name: ASCC2

NCBI Gene Entry: [84164](#)

Storage

Store at -80 °C for one year.

Kit Components

1. WB-Validated ASCC2 shRNA lentiviral particles (4 mL)
2. Non-Target shRNA lentiviral particles (4 mL)
3. Verification Tool: KD-Validated Anti-ASCC2 Mouse mAb #63525 (5 µL)

Tested Cell Line

HeLa

Validation Methods

RT-qPCR; Western Blotting (WB)

Shipping

Shipped with dry ice. Immediately store the product in a standard freezer at -80°C upon receipt.

Instructions For Use

The following protocol uses HeLa cell as an example assuming your cell culture medium is DMEM-based.

1. Release 0.5 million HeLa cells into a 35 mm tissue culture dish in 2 mL of the growth medium (DMEM containing 10% FBS and 1% pen/strep). Cell density should reach 50-60% confluence the following day.
2. 24 h after cell release, pre-warm the shRNA lentiviral medium to 37°C.
3. Discard 1 mL of the original growth medium of the 35 mm dish.
4. Using a serological pipette, gently mix the lentiviral solution 3 times.
5. Carefully add 1 mL of the lentiviral solution to the well. Tip: To prevent splashing, add the

SUPPORT

SUPPORT@GENUINBIOTECH.COM
TEL: +1-540-855-7041

ORDERS

SALES@GENUINBIOTECH.COM
FAX: +1-540-855-7041

WWW.GENUINBIOTECH.COM

solution to the dish along the wall.

6. Add a polybrene stock solution to the culture medium at a final concentration of 5 µg/mL.

Gently swirl the dish to mix.

7. 48 h after cell release, without discarding the original medium, add another 1 mL of lentiviral medium directly into the dish.

8. Add an additional polybrene stock solution into the dish to obtain a final concentration of 5 µg/mL. Tip: Now, the medium in the dish should be a total of 3 mL.

9. 72 h after cell release, cells may reach confluence. Trypsinize the cells off the 35 mm dish and culture those cells in a 60 mm dish.

10. Add puromycin to the dish at a final concentration of 4 µg/mL. Tip: To assess the efficacy of puromycin selection, culture a dish of wild-type HeLa cells as a negative control.

11. Allow puromycin selection for 48 h. Almost all wild-type HeLa cells should die, while the dish infected with lentiviruses should have some remaining cells.

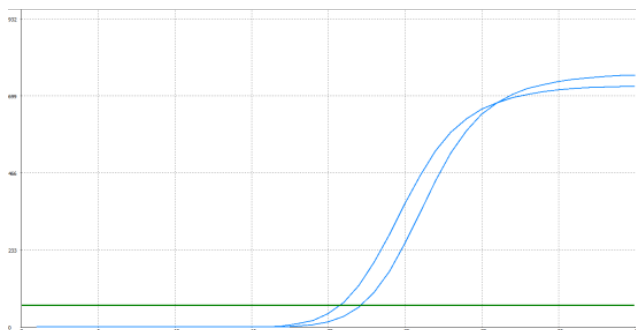
12. Replace the medium with regular growth medium without puromycin and allow the cells to grow to confluence before harvesting or staining.

Note: 1. This product is for research use only.

2. This product is only supplied to end users.

3. Do not use this product for commercial.

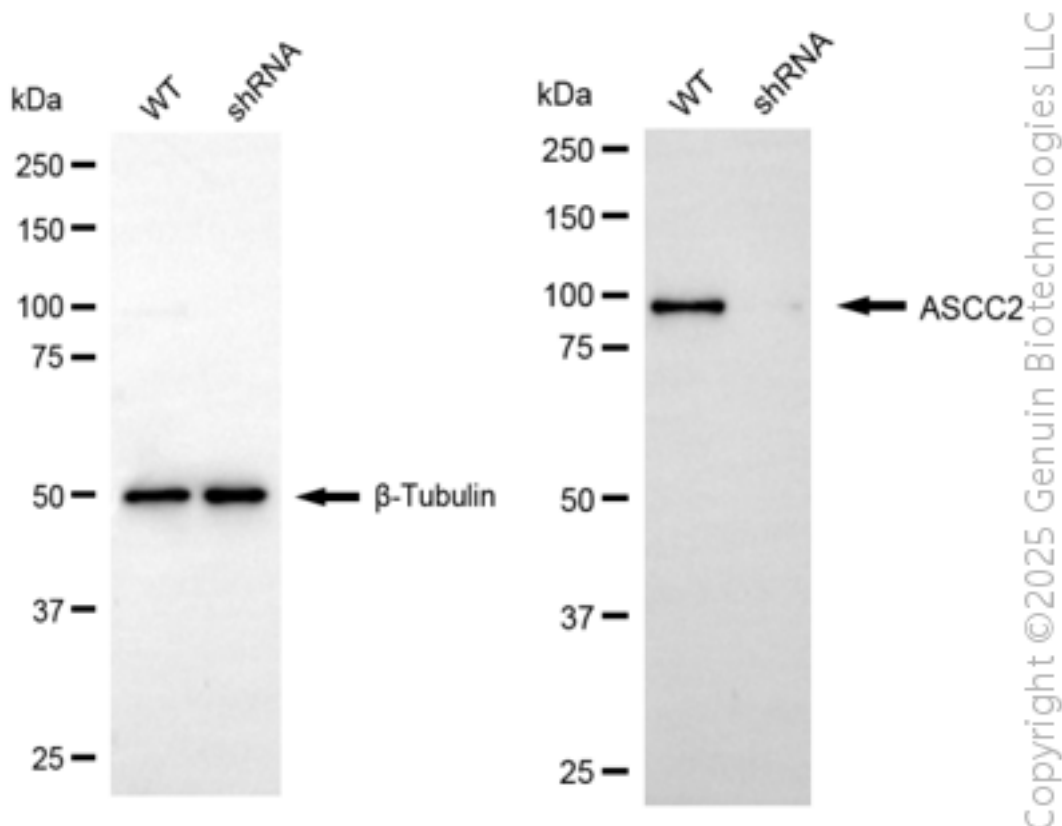
Validation Data



Genotype	Ct Value
Wild-Type	20.34
Knock-Down	21.80
ΔCt (CtKD-CtWT)	1.46
% mRNA Reduction	64%

Copyright © 2025 GenUin Biotechnologies LLC

RT-qPCR analysis. HeLa cells were infected with ASCC2-specific shRNA lentiviral particles, total RNA was extracted from wild-type and knockdown cells, RT-qPCR was performed using gene-specific primers. ΔC_t (CtKD-CtWT) was used to calculate mRNA reduction (%) between wild-type and knockdown cells using the following formula: $(1 - 1/2^{\Delta C_t}) \times 100\%$.



Western blotting analysis. ASCC2 protein expression in wild-type (WT) and shRNA knockdown (KD) HeLa cells was detected using Western blotting. β -Tubulin served as a loading control. The blots were incubated with primary antibodies against ASCC2 and β -Tubulin, respectively, followed by incubating with HRP-conjugated goat anti-mouse secondary antibody. Images were developed using FeQ™ ECL Substrate Kit.