

WB-Validated CFAP298 Lentiviral shRNA Knockdown Kit



Catalog #: V63796

Aliases

CFAP298; Cilia And Flagella Associated Protein 298; C21orf48; C21orf59; DNAAF16; CILD26; FBB18; Kur; Cilia- And Flagella-Associated Protein 298; Dynein Axonemal Assembly Factor 16; Protein Kurly Homolog; FLJ20467; Prostate Cancer Upregulated Protein 1; Chromosome 21 Open Reading Frame 48; Chromosome 21 Open Reading Frame 59; Kurly Homolog (Zebrafish); UPF0769 Protein C21orf59; Kurly Homolog

Background

Gene Name: CFAP298

NCBI Gene Entry: [56683](#)

Storage

Store at -80 °C for one year.

Kit Components

1. WB-Validated CFAP298 shRNA lentiviral particles (4 mL)
2. Non-Target shRNA lentiviral particles (4 mL)
3. Verification Tool: KD-Validated Anti-CFAP298 Mouse mAb #63796 (5 µL)

Tested Cell Line

HT-1080

Validation Methods

RT-qPCR; Western Blotting (WB)

Shipping

Shipped with dry ice. Immediately store the product in a standard freezer at -80°C upon receipt.

Instructions For Use

The following protocol uses HT-1080 cell as an example assuming your cell culture medium is DMEM-based.

1. Release 0.5 million HT-1080 cells into a 35 mm tissue culture dish in 2 mL of the growth medium (DMEM containing 10% FBS and 1% pen/strep). Cell density should reach 50-60% confluence the following day.
2. 24 h after cell release, pre-warm the shRNA lentiviral medium to 37°C.
3. Discard 1 mL of the original growth medium of the 35 mm dish.

SUPPORT

SUPPORT@GENUINBIOTECH.COM
TEL: +1-540-855-7041

ORDERS

SALES@GENUINBIOTECH.COM
FAX: +1-540-855-7041

WWW.GENUINBIOTECH.COM

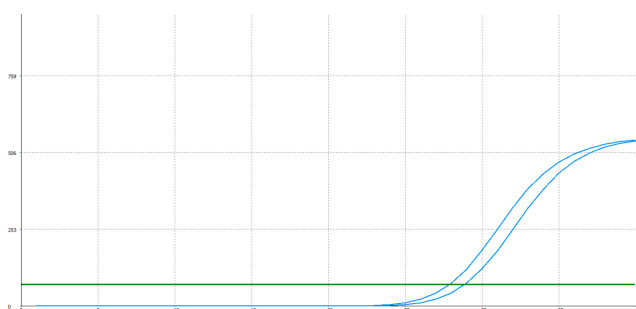
WB-Validated CFAP298 Lentiviral shRNA Knockdown Kit

PAGE 2

4. Using a serological pipette, gently mix the lentiviral solution 3 times.
5. Carefully add 1 mL of the lentiviral solution to the well. Tip: To prevent splashing, add the solution to the dish along the wall.
6. Add a polybrene stock solution to the culture medium at a final concentration of 5 µg/mL. Gently swirl the dish to mix.
7. 48 h after cell release, without discarding the original medium, add another 1 mL of lentiviral medium directly into the dish.
8. Add an additional polybrene stock solution into the dish to obtain a final concentration of 5 µg/mL. Tip: Now, the medium in the dish should be a total of 3 mL.
9. 72 h after cell release, cells may reach confluence. Trypsinize the cells off the 35 mm dish and culture those cells in a 60 mm dish.
10. Add puromycin to the dish at a final concentration of 4 µg/mL. Tip: To assess the efficacy of puromycin selection, culture a dish of wild-type HT-1080 cells as a negative control.
11. Allow puromycin selection for 48 h. Almost all wild-type HT-1080 cells should die, while the dish infected with lentiviruses should have some remaining cells.
12. Replace the medium with regular growth medium without puromycin and allow the cells to grow to confluence before harvesting or staining.

Note: 1. This product is for research use only.
2. This product is only supplied to end users.
3. Do not use this product for commercial.

Validation Data



Genotype	Ct Value
Wild-Type	26.80
Knock-Down	27.76
$\Delta Ct (Ct_{KD} - Ct_{WT})$	0.96
% mRNA Reduction	↓ 49%

Copyright ©2025 Genuin Biotechnologies LLC

RT-qPCR analysis. HT-1080 cells were infected with CFAP298-specific shRNA lentiviral particles, total RNA was extracted from wild-type and knockdown cells, RT-qPCR was performed using gene-specific primers. $\Delta Ct (Ct_{KD} - Ct_{WT})$ was used to calculate mRNA reduction (%) between wild-type and knockdown cells using the following formula: $(1 - 1/2^{\Delta Ct}) \times 100\%$.

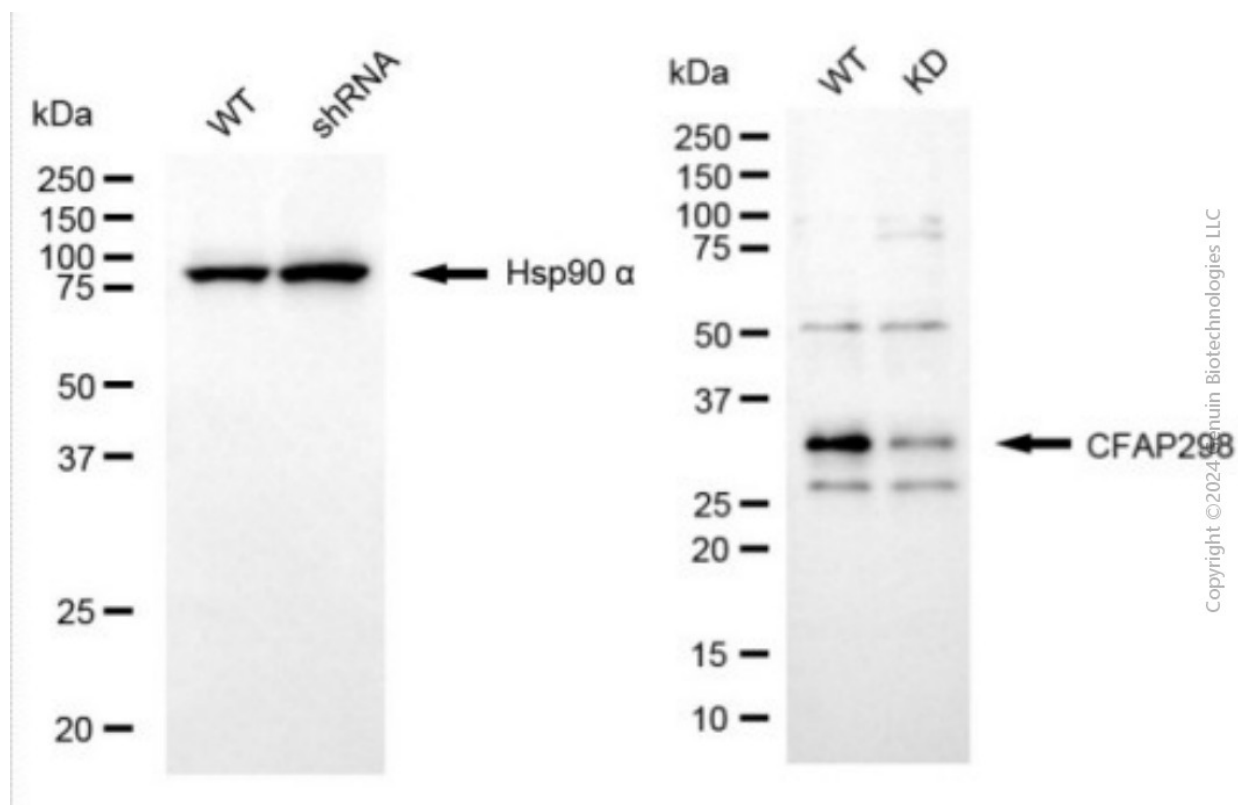
SUPPORT

SUPPORT@GENUINBIOTECH.COM
TEL: +1-540-855-7041

ORDERS

SALES@GENUINBIOTECH.COM
FAX: +1-540-855-7041

WWW.GENUINBIOTECH.COM



Western blotting analysis. CFAP298 protein expression in wild-type (WT) and shRNA knockdown (KD) HT-1080 cells was detected using Western blotting. Hsp90 α served as a loading control. The blots were incubated with primary antibodies against CFAP298 and Hsp90 α , respectively, followed by incubating with HRP-conjugated goat anti-mouse secondary antibody. Images were developed using FeQ™ ECL Substrate Kit.