

WB-Validated PIK3CB Lentiviral shRNA Knockdown Kit



Catalog #: V6911

Aliases

PIK3CB; Phosphatidylinositol-4,5-Bisphosphate 3-Kinase; Catalytic SubunitBeta; PI3K; PIK3C1; PI3KBETA; Phosphoinositide-3-Kinase; Catalytic; Beta Polypeptide; Phosphatidylinositol 4,5-Bisphosphate 3-Kinase Catalytic Subunit Beta Isoform; Phosphatidylinositol 4,5-Bisphosphate 3-Kinase 110 KDa Catalytic Subunit Beta; Phosphatidylinositol-4,5-Bisphosphate 3-Kinase 110 KDa Catalytic Subunit Beta; PtdIns-3-Kinase Subunit Beta; PI3-Kinase P110 Subunit Beta; PtdIns-3-Kinase Subunit P110-Beta; PtdIns-3-Kinase P110; PI3K-beta; PI3Kbeta; PI3-Kinase Subunit Beta; p110beta; EC 2.7.1.153; PI3KCB; P110BETA; EC 2.7.1

Background

Gene Name: PIK3CB

NCBI Gene Entry: [5291](#)

Storage

Store at -80 °C for one year.

Kit Components

1. WB-Validated PIK3CB shRNA lentiviral particles (4 mL)
- 2 . Non-Target shRNA lentiviral particles (4 mL)
3. Verification Tool: KD-Validated Anti-PI3 Kinase p110 beta Rabbit mAb #64311 (5 µL)

Tested Cell Line

HT-1080

Validation Methods

RT-qPCR; Western Blotting (WB)

Shipping

Shipped with dry ice. Immediately store the product in a standard freezer at -80°C upon receipt.

Instructions For Use

The following protocol uses HT-1080 cell as an example assuming your cell culture medium is DMEM-based.

- 1.Release 0.5 million HT-1080 cells into a 35 mm tissue culture dish in 2 mL of the growth medium (DMEM containing 10% FBS and 1% pen/strep). Cell density should reach 50-60% confluence the following day.

SUPPORT

SUPPORT@GENUINBIOTECH.COM
TEL: +1-540-855-7041

ORDERS

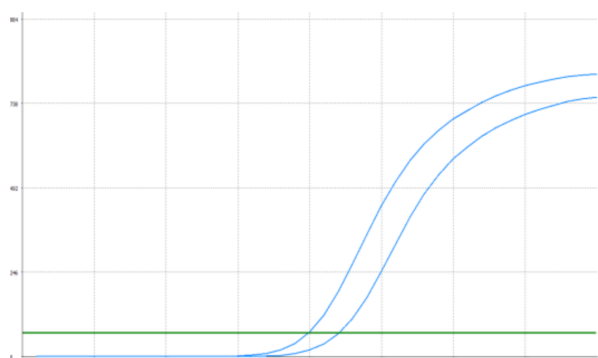
SALES@GENUINBIOTECH.COM
FAX: +1-540-855-7041

WWW.GENUINBIOTECH.COM

- 2.24 h after cell release, pre-warm the shRNA lentiviral medium to 37°C.
3. Discard 1 mL of the original growth medium of the 35 mm dish.
4. Using a serological pipette, gently mix the lentiviral solution 3 times.
5. Carefully add 1 mL of the lentiviral solution to the well. Tip: To prevent splashing, add the solution to the dish along the wall.
6. Add a polybrene stock solution to the culture medium at a final concentration of 5 µg/mL. Gently swirl the dish to mix.
7. 48 h after cell release, without discarding the original medium, add another 1 mL of lentiviral medium directly into the dish.
8. Add an additional polybrene stock solution into the dish to obtain a final concentration of 5 µg/mL. Tip: Now, the medium in the dish should be a total of 3 mL.
9. 72 h after cell release, cells may reach confluence. Trypsinize the cells off the 35 mm dish and culture those cells in a 60 mm dish.
10. Add puromycin to the dish at a final concentration of 4 µg/mL. Tip: To assess the efficacy of puromycin selection, culture a dish of wild-type HT-1080 cells as a negative control.
11. Allow puromycin selection for 48 h. Almost all wild-type HT-1080 cells should die, while the dish infected with lentiviruses should have some remaining cells.
12. Replace the medium with regular growth medium without puromycin and allow the cells to grow to confluence before harvesting or staining.

Note: 1. This product is for research use only.
2. This product is only supplied to end users.
3. Do not use this product for commercial.

Validation Data



Genotype	Ct Value
Wild-Type	19.59
Knock-Down	21.58
$\Delta C_t (C_{t_{KD}} - C_{t_{WT}})$	1.99
% mRNA Reduction	↓ 75%

Copyright ©2024 Genuin Biotechnologies LLC

RT-qPCR analysis. HT-1080 cells were infected with PIK3CB-specific shRNA lentiviral particles, total RNA was extracted from wild-type and knockdown cells, RT-qPCR was performed using gene-specific primers. $\Delta C_t (C_{t_{KD}} - C_{t_{WT}})$ was used to calculate mRNA reduction (%) between wild-type and knockdown cells using the following formula: $(1 - 1/2^{\Delta C_t}) \times 100\%$.

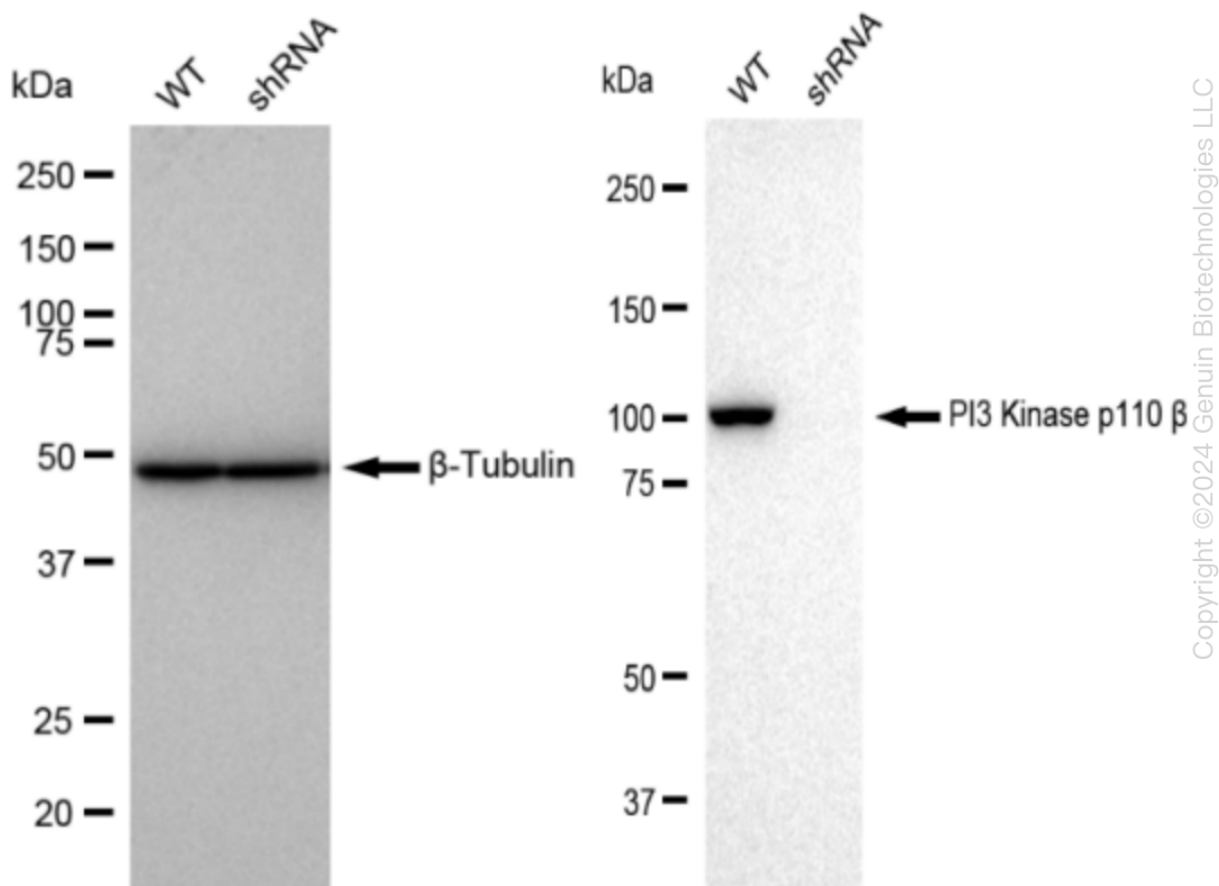
SUPPORT

SUPPORT@GENUINBIOTECH.COM
TEL: +1-540-855-7041

ORDERS

SALES@GENUINBIOTECH.COM
FAX: +1-540-855-7041

WWW.GENUINBIOTECH.COM



Western blotting analysis. PIK3CB protein expression in wild-type (WT) and shRNA knockdown (KD) HT-1080 cells was detected using Western blotting. β -Tubulin served as a loading control. The blots were incubated with primary antibodies (Cat#64311, 1:5,000) against PIK3CB and β -Tubulin, respectively, followed by incubating with HRP-conjugated goat anti-rabbit secondary antibody (Cat#201, 1:20,000). Images were developed using FeQ™ ECL Substrate Kit (Cat#226).